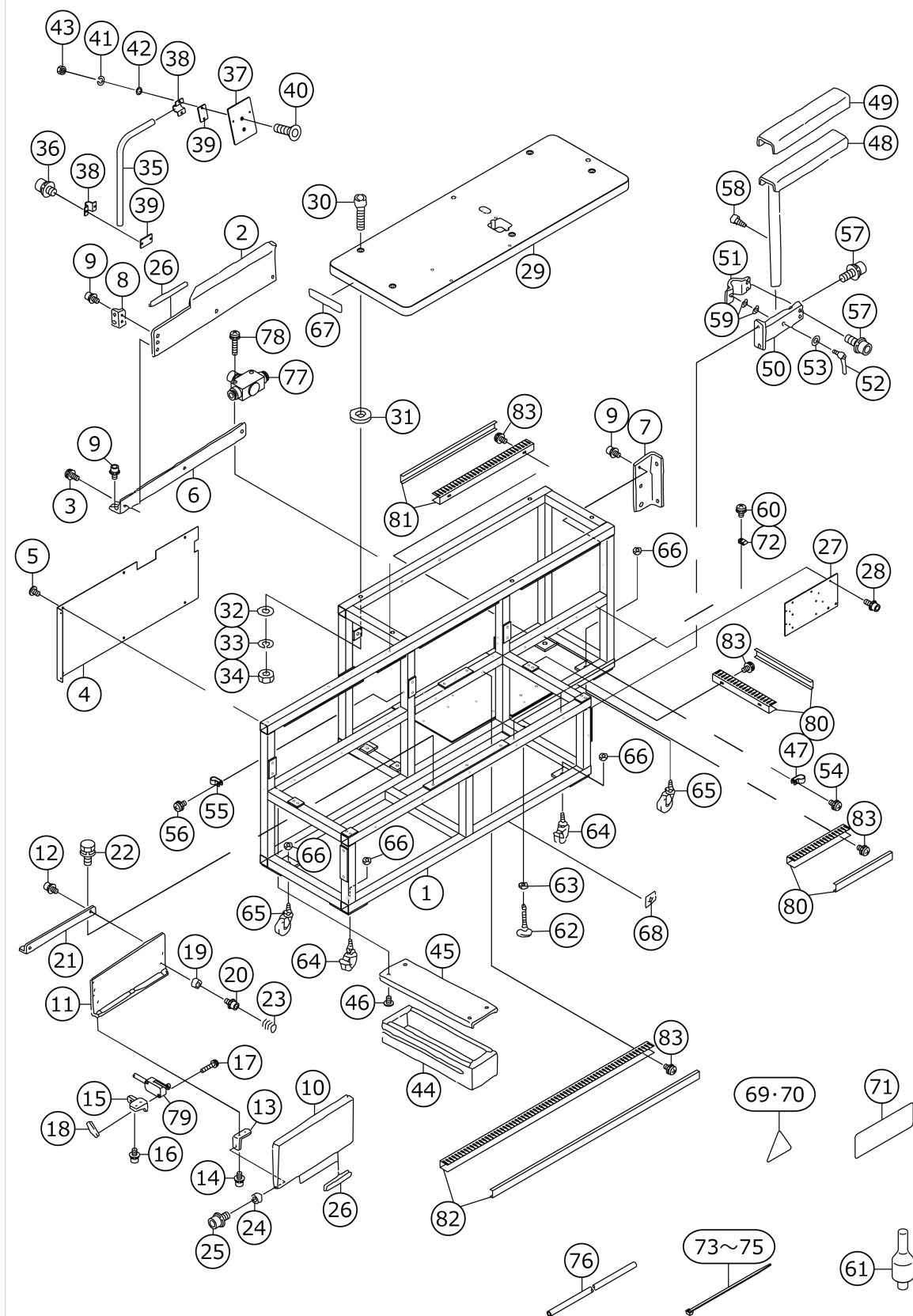


ACF-172-1790

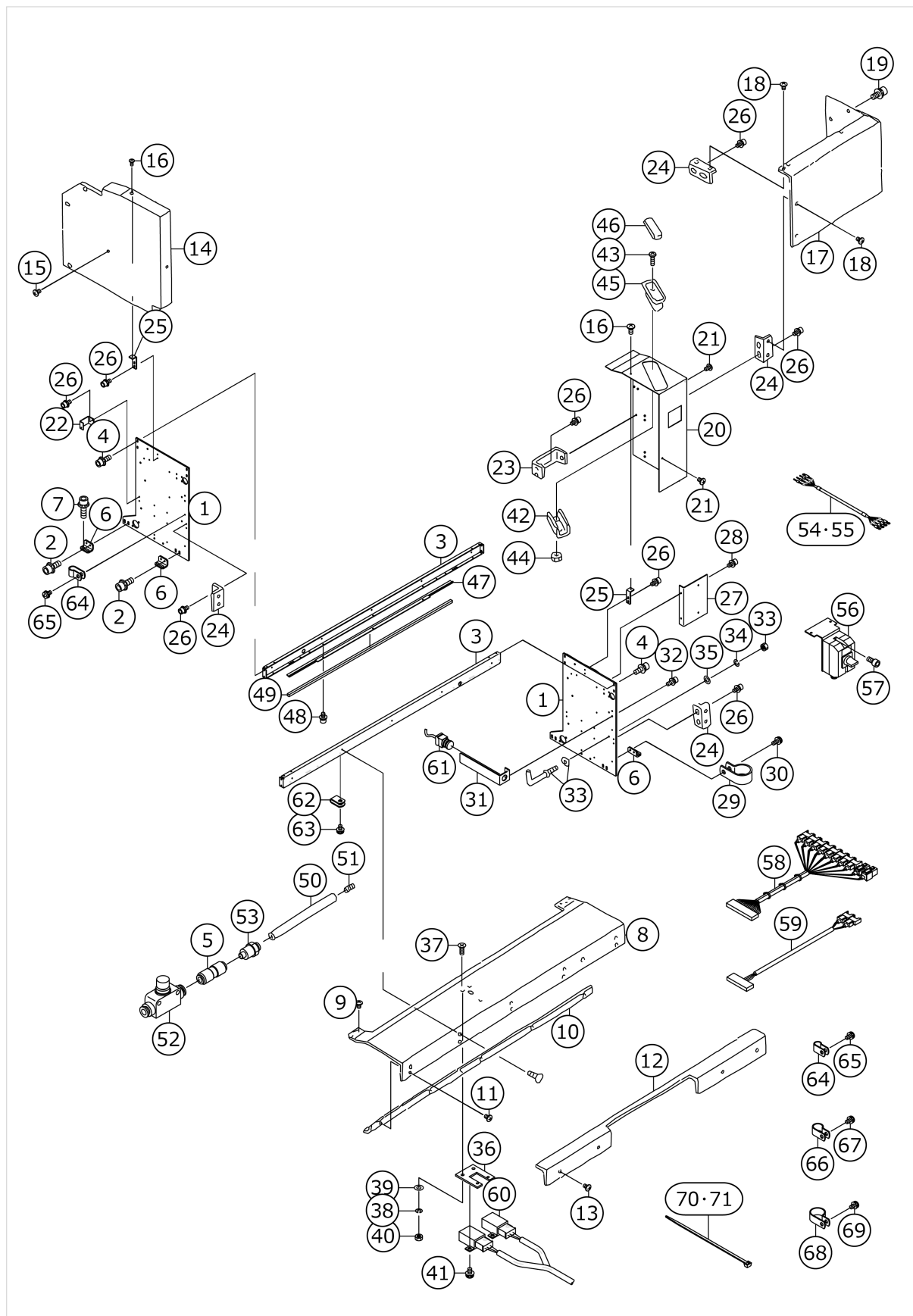
## FRAME & MECHANISM COVER COMPONENTS (1)



No.	品番	品名	備考	子部品	消耗品	個数
1	40014271	FRAME				1.00
2	G5020172000	REAR COVER, TOP				1.00
3	SL4041091SC	SCREW M4 L=10				3.00
4	40019865	REAR_CIVER_LOWER				1.00
5	SM0040601SA	SCREW				6.00
6	G5022172000	REAR COVER SUPPORT, TOP				1.00
7	G5024172000	RIGHT COVER SUPPORT, LARGE				1.00
8	G5034171000	COVER SUPPORT				1.00
9	SL6040892TN	BOLT				8.00
10	G50051720A0	KNEE SWITCH				1.00
11	G5006172000	KNEE SWITCH SUPPORT				1.00
12	SL6040892TN	BOLT				2.00
13	G5007172000	KNEE SWITCH SHAFT HOLDER				2.00
14	SL6040892TN	BOLT				4.00
15	G5008172000	MICROSWITCH FITTING PLATE				1.00
16	SL6040892TN	BOLT				2.00
17	SL4031691SC	SCREW M3 L=16				2.00
18	13774906	SWITCH BASE				1.00
19	G5009172000	STOPPER RUBBER				3.00
20	SL6040842TN	SCREW M4 L=8				3.00
21	G5010172000	KNEE SWITCH FITTING PLATE				1.00
22	SL9061693SE	WASHER HEXAGONAL BOLT M6 L=16				3.00
23	B3207470000	SPRING				2.00
24	B2544280000	WASHER, FOR WORK CLAMP FOOT HO				2.00
25	SL6061292TN	SCREW				2.00
26	GBR01910000	RUBBER CUSHION				3.00
27	40011422	SV-BASE				1.00
28	SL6041092TN	SCREW				3.00
29	40011321	TABLE_ACF				1.00
30	MTJMS000030	SCREW				5.00
31	22573505	PACKING				5.00
32	WP0852086SC	WASHER M8				5.00
33	WS0820002KN	SPRING WASHER M8				5.00
34	NS6200710SN	NUT 5/16-18				5.00
35	G1017192000	STAND				1.00
36	SL6061692TN	BOLT				2.00
37	40011423	PANEL_PLATE				1.00
38	G1015192000	CLAMP				2.00
39	G1016192000	CLAMP BOTTOM PLATE				2.00
40	SM1062052TP	SCREW M6 L=20				2.00
41	WS0610002KN	SPRING WASHER 6.1X12.2X1.5				2.00
42	WP0641601SC	WASHER				2.00
43	NM6060001SC	NUT M6				2.00
44	11155108	DRAWER				1.00
45	G5011172000	DRAWING RAIL				1.00
46	SM0040601SA	SCREW				4.00
47	HX00150000F	CABLE CLIP				3.00
48	G50281720A0	CLOTH LAYING TABLE				1.00
49	G5029172000	CLOTH LAYING TABLE CUSHION				1.00
50	G50301720A0	CLOTH LAYING TABLE SUPPORT				1.00

51	G5031172000	CLOTH LAYING TABLE SADDLE				1.00
52	G5032172000	CLOTH LAYING TABLE LEVER				1.00
53	WP0841601SC	WASHER 8.4X17.4X1.6				1.00
54	SL4040881SC	SCREW M4 L=8				3.00
55	HX00150000D	CABLE CLIP				1.00
56	SL4040881SC	SCREW M4 L=8				1.00
57	SL6061692TN	BOLT				4.00
58	SM6061202TN	BOLT				1.00
59	MTJMG000000	RUBBER CUSHION				2.00
60	SL4040881SC	SCREW M4 L=8				3.00
61	14101208	HEAD SUPPORT BAR				1.00
62	G5033172000	ADJUSTER				1.00
63	NM6160001SC	NUT				1.00
64	G5031164000	CASTER WITH BRAKE				4.00
65	G5032164000	CASTER				2.00
66	NM6160001SC	NUT				6.00
67	40015134	COMOLETE_NAME_PLATE				1.00
68	16870206	GRAVITY SEAL				1.00
69	CM300200003	ATTENTION LABEL				3.00
70	CM300200004	LABEL (50)				1.00
71	CM301300001	SAFETY LABEL				1.00
72	HX001500000	CLIP				3.00
73	EA9500B0100	CABLE BAND				7.00
74	HX00065000B	CABLE BAND				4.00
75	HX002920000	BAND				3.00
76	BT0400251EB	URETHANE HOSE, BLACK				1.00
77	PC012601000	SPEED CONTROLLER				1.00
78	SL4042081SC	SCREW				1.00
79	40016844	START SWITCH ASSY				1.00
80	G6801172000	DUCT, A				2.00
81	G6802172000	DUCT, B				1.00
82	G6803172000	DUCT, C				1.00
83	SL4040891SC	SCREW M4 L=8				12.00

## FRAME & MECHANISM COVER COMPONENTS (2)





No.	品番	品名	備考	子部品	消耗品	個数
1	40015611	SIDE_COVER				2.00
2	SL6061692TN	BOLT				8.00
3	G5003172000	SIDE PLATE CONNECTING PLATE				2.00
4	SL6051492TN	BOLT				8.00
5	PJ303060001	STRAIGHT UNION				1.00
6	G5037172000	SIDE PLATE				4.00
7	SL6062092TN	SCREW M6 L=20				8.00
8	G5014172000	UPPER COVER				1.00
9	SM0040601SA	SCREW				9.00
10	G5015172000	FRONT COVER, TOP				1.00
11	SM0040601SA	SCREW				5.00
12	G5016172000	FRONT COVER, BOTTOM				1.00
13	SM0040601SA	SCREW				4.00
14	G5017172000	LEFT COVER				1.00
15	SM0040601SA	SCREW				5.00
16	SM0030601SA	SCREW M3X0.5 L=6				2.00
17	G5018172000	RIGHT COVER, LARGE				1.00
18	SM0040601SA	SCREW				3.00
19	SL6061492TN	BOLT				2.00
20	40019864	RIGHT_COVER				1.00
21	SM0040601SA	SCREW				2.00
22	G5023172000	LEFT COVER SUPPORT				1.00
23	G5025172000	RIGHT COVER SUPPORT, SMALL				1.00
24	G5034171000	COVER SUPPORT				5.00
25	G5016162000	STOPPER PLATE				2.00
26	SL6040892TN	BOLT				18.00
27	40015612	SWITCH_BASE				1.00
28	SL6040892TN	BOLT				2.00
29	HX00150000K	CABLE CLIP				2.00
30	SL4041081SC	SCREW M4 L=10				2.00
31	G5026172000	EMERGENCY SWITCH FITTING PLATE				1.00
32	SL6041092TN	SCREW				2.00
33	G5026162000	HOOK				1.00
34	WS0510002KN	SPRING WASHER				1.00
35	WP0531001SC	WASHER				1.00
36	G5013172000	CLOTH SENSOR FITTING PLATE				2.00
37	SM1030801SC	SCREW M3 L=8				4.00
38	WS0310002KN	SPRING WASHER M3				4.00
39	WP0320501SC	WASHER M3				4.00
40	NM6030001SC	NUT M3				4.00
41	SL4030681SC	SCREW M3 L=6				4.00
42	G5027172000	SMALL CASTINGS CASE SUPPOT				1.00
43	SM4041401SC	SCREW M4X0.7 L=14				2.00
44	NM6040001SC	NUT M4				2.00
45	11156007	CASE				1.00
46	11155801	CASE MAGNET				1.00
47	G5217172000	CLOTH PRESSER PLATE				1.00
48	SL6040892TN	BOLT				3.00
49	G5212172000	PUSHER CUSHION				1.00
50	G5136172000	BLOW PIPE				1.00

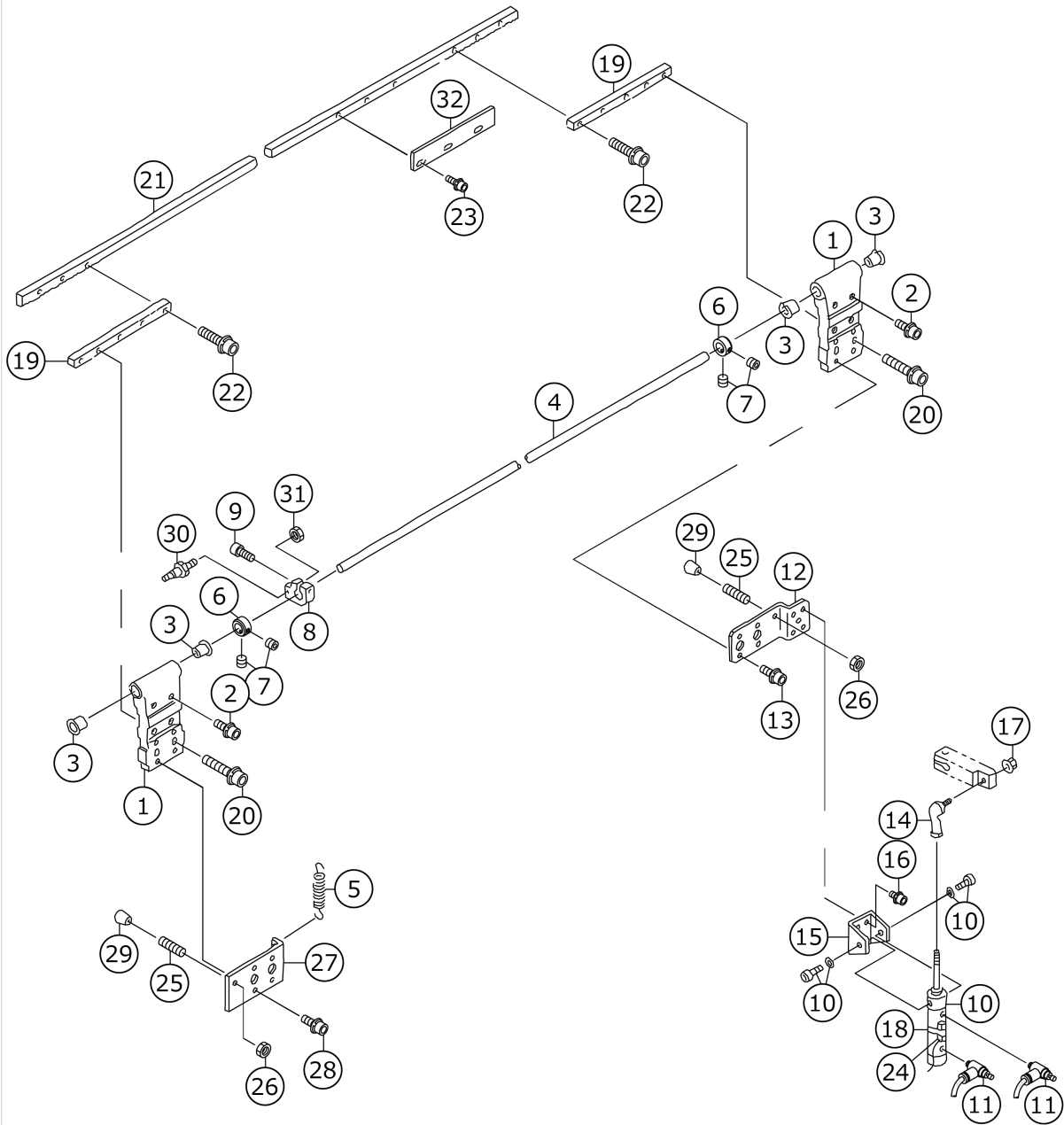
51	SM8050812TP	SCREW M5X8				1.00
52	PC012601000	SPEED CONTROLLER				1.00
53	PJ032059008	NIPPLE				1.00
54	40017091	AC POWER CORD 3P ASSY				1.00
55	40017092	AC POWER CORD 1P ASSY				1.00
56	HA004860000	POWER SWITCH				1.00
57	SM6051002TN	BOLT				2.00
58	40016852	SENSOR JOINT CORD A ASSY				1.00
59	40016853	SENSOR JOINT CORD B ASSY				1.00
60	40016845	CLOTH DETECT SENSOR ASSY				1.00
61	40015562	PAUSE SWITCH ASSY				1.00
62	HX001500000	CLIP				1.00
63	SL4040881SC	SCREW M4 L=8				1.00
64	HX00150000B	CABLE CLIP				1.00
65	SL4040881SC	SCREW M4 L=8				1.00
66	HX00150000D	CABLE CLIP				1.00
67	SL4040881SC	SCREW M4 L=8				1.00
68	HX00150000H	CABLE CLIP				4.00
69	SL4040881SC	SCREW M4 L=8				4.00
70	EA9500B0100	CABLE BAND				12.00
71	HX00065000B	CABLE BAND				3.00



No.	品番	品名	備考	子部品	消耗品	個数
1	G5115172000	ROCKING ARM				1.00
2	SM9082503SE	HEXAGONAL HEADED BOLT				1.00
3	WP0841601SC	WASHER 8.4X17.4X1.6				1.00
4	G5116172000	STUD BRACKET				2.00
5	SM6083002TP	SCREW M8 L=30				2.00
6	G5117172000	STUD, LEFT				1.00
7	G5118172000	STUD, RIGHT				1.00
8	SM6061202TP	SCREW M6 L=12				4.00
9	G5119172000	STUD STOPPER				2.00
10	SM6061202TP	SCREW M6 L=12				2.00
11	NM6060003SC	NUT M6				2.00
12	G5122172000	CLAMP TABLE SUPPORT				1.00
13	SL9061693SE	WASHER HEXAGONAL BOLT M6 L=16				4.00
14	EA9500B0100	CABLE BAND				8.00
15	PJ303040002	STRAIGHT UNION				2.00
16	G51231720A0	CLAMP TABLE				1.00
17	G5144162000	SCREW				8.00
18	G5138172000	CLAMP TABLE LINER				1.00
19	WS0410002KN	SPRING WASHER				8.00
20	PA160100500	AIR CYLINDER				1.00
21	PC010519000	SPEED CONTROLLER				1.00
22	PJ301040502	HALF UNION 4XM5				1.00
23	SM6033052TP	SCREW				4.00
24	WS0310002KN	SPRING WASHER M3				4.00
25	SM4040801SN	SCREW M4 L=8				1.00
26	WS0410002KN	SPRING WASHER				1.00
27	G5124172000	HOLDING PLATE, LEFT				1.00
28	G5125172000	HOLDING PLATE, RIGHT				1.00
29	SL6051092TN	BOLT				4.00
30	G5140172000	SPACER				2.00
31	G5126172000	CLAMP SHAFT HOLDER				4.00
32	G5127172000	CLAMP SHAFT				2.00
33	RE0500000K0	E-RING				2.00
34	G5128172000	CLAMP SHAFT ARM				1.00
35	G5144162000	SCREW				2.00
36	WP0430801SC	WASHER 4.3X9X0.8				2.00
37	G5129172000	CLAMP SPRING				1.00
38	G5130172000	CLAMP FITTING BASE				1.00
39	SL6051092TN	BOLT				4.00
40	G5131172000	CLAMP FITTING NUT				1.00
41	G5132172000	CLAMP, LARGE				2.00
42	G5133172000	CLAMP, SMALL				2.00
43	SL4040891SC	SCREW M4 L=8				12.00
44	SM8041012TP	SCREW M4 L=10				10.00
45	NM6040003SC	NUT M4				10.00
46	G5134172000	CLAMP CUSHION, LARGE				2.00
47	G5135172000	CLAMP CUSHION, SMALL				1.00
48	G5136172000	BLOW PIPE				1.00
49	PJ301060503	HALF UNION				1.00
50	SM8050812TP	SCREW M5X8				1.00

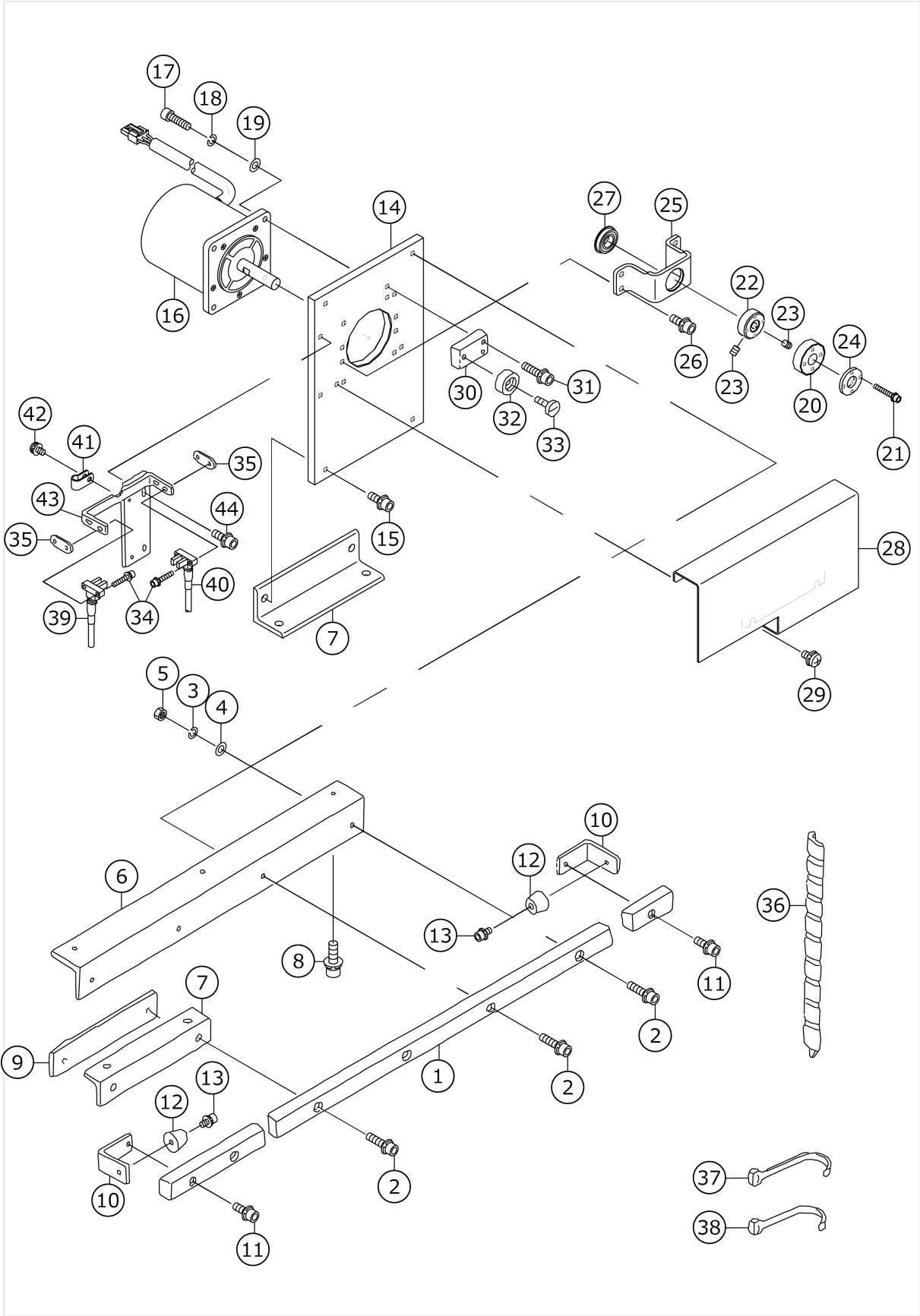
51	SM8040402TP	SCREW M4X0.7 L=4				4.00
52	G5137172000	BLOW PIPE HOLDER				4.00
53	SM0040601SA	SCREW				4.00
54	WP0430801SC	WASHER 4.3X9X0.8				4.00
55	HX00150000F	CABLE CLIP				2.00
56	SL4040881SC	SCREW M4 L=8				2.00

FEED BODY COMPONENTS (2)



No.	品番	品名	備考	子部品	消耗品	個数
1	G5101172000	FEED BODY				2.00
2	SL6051442TN	BOLT				8.00
3	G5112172000	FEED BODY FALLING SHAFT HOLDER				4.00
4	G5113172000	FEED BODY FALLING SHAFT				1.00
5	40020109	CLAMP_TABLE_SPRING				1.00
6	16136905	THRUST COVER				2.00
7	SS8660612TP	SCREW 1/4-40 L=6				4.00
8	11206505	FEED DRIVING LINK				1.00
9	SS6121212TP	SCREW 3/16-28 L=12.0				1.00
10	PA200251500	AIR CYLINDER (DIA20-25ST)				1.00
11	PC010508000	SPEED CONTROLLER				2.00
12	G5114172000	FALLING CYLINDER SUPPORT				1.00
13	SL6051492TN	BOLT				4.00
14	G5204171000	LINK BOLL				1.00
15	PA900041000	CYLINDER BRACKET				1.00
16	SL6040892TN	BOLT				4.00
17	G5238171000	NUT				1.00
18	PX906003000	SWITCH CLAMP (DIA20)				1.00
19	G5106172000	RACK FIXING ROD				2.00
20	SL6063092TN	SCREW M6 L=30				4.00
21	G5107172000	RACK				1.00
22	SL6062592TN	SCREW				6.00
23	SL6041292TN	SCREW				3.00
24	40016849	CARRIER MOV CYL SW ASSY				1.00
25	SM8062012TP	SCREW M6 L=20				2.00
26	NM6060003SC	NUT M6				2.00
27	G5120172000	STUD STOPPER FITTING PLATE				1.00
28	SL6051492TN	BOLT				4.00
29	G5138161000	RUBBER CAP				2.00
30	G5121172000	SPRING HOOK				1.00
31	NM6060003SC	NUT M6				1.00
32	G5102164000	ORIGINAL POINT SENSOR PLATE				1.00

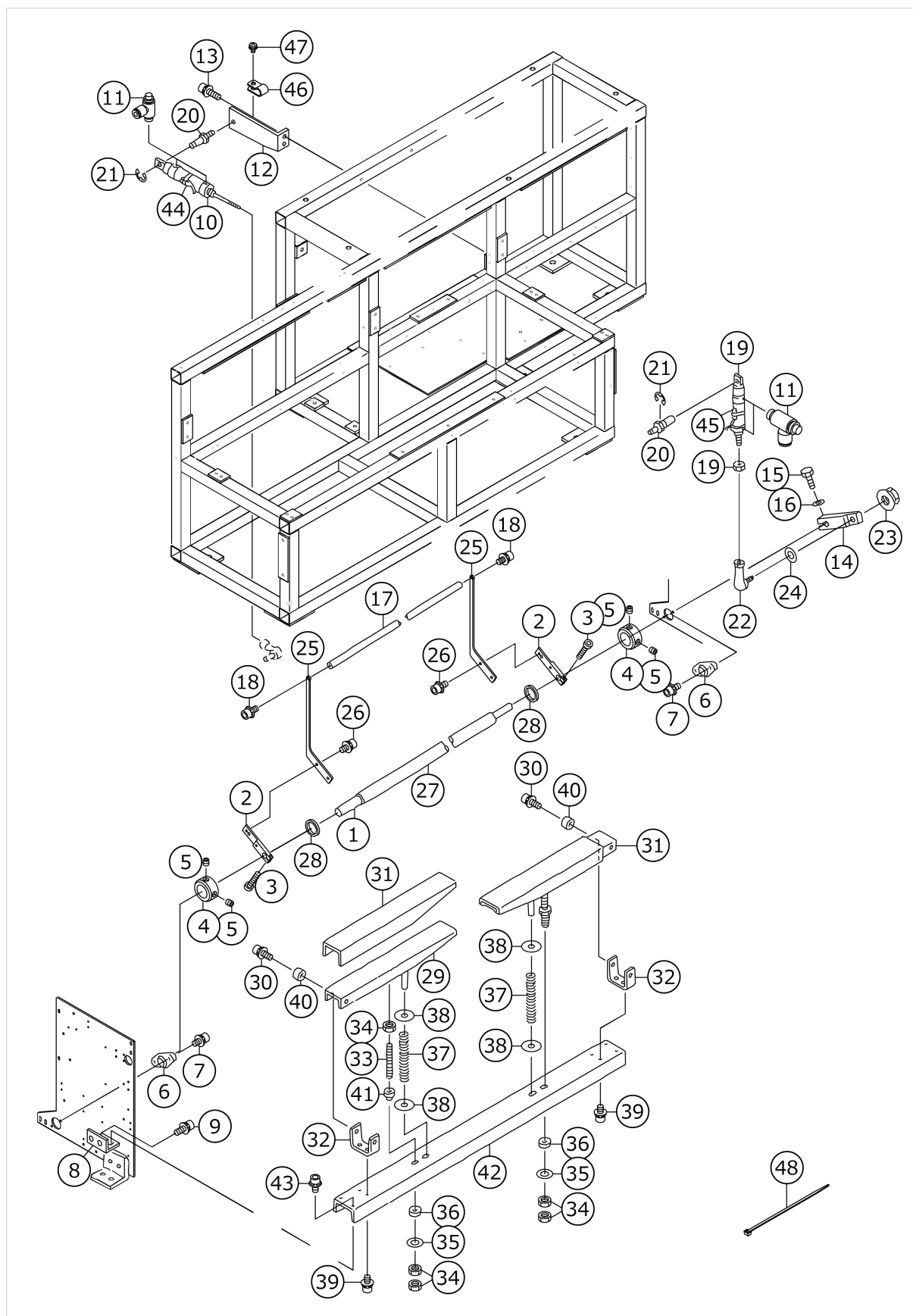
FEED BODY COMPONENTS (3)





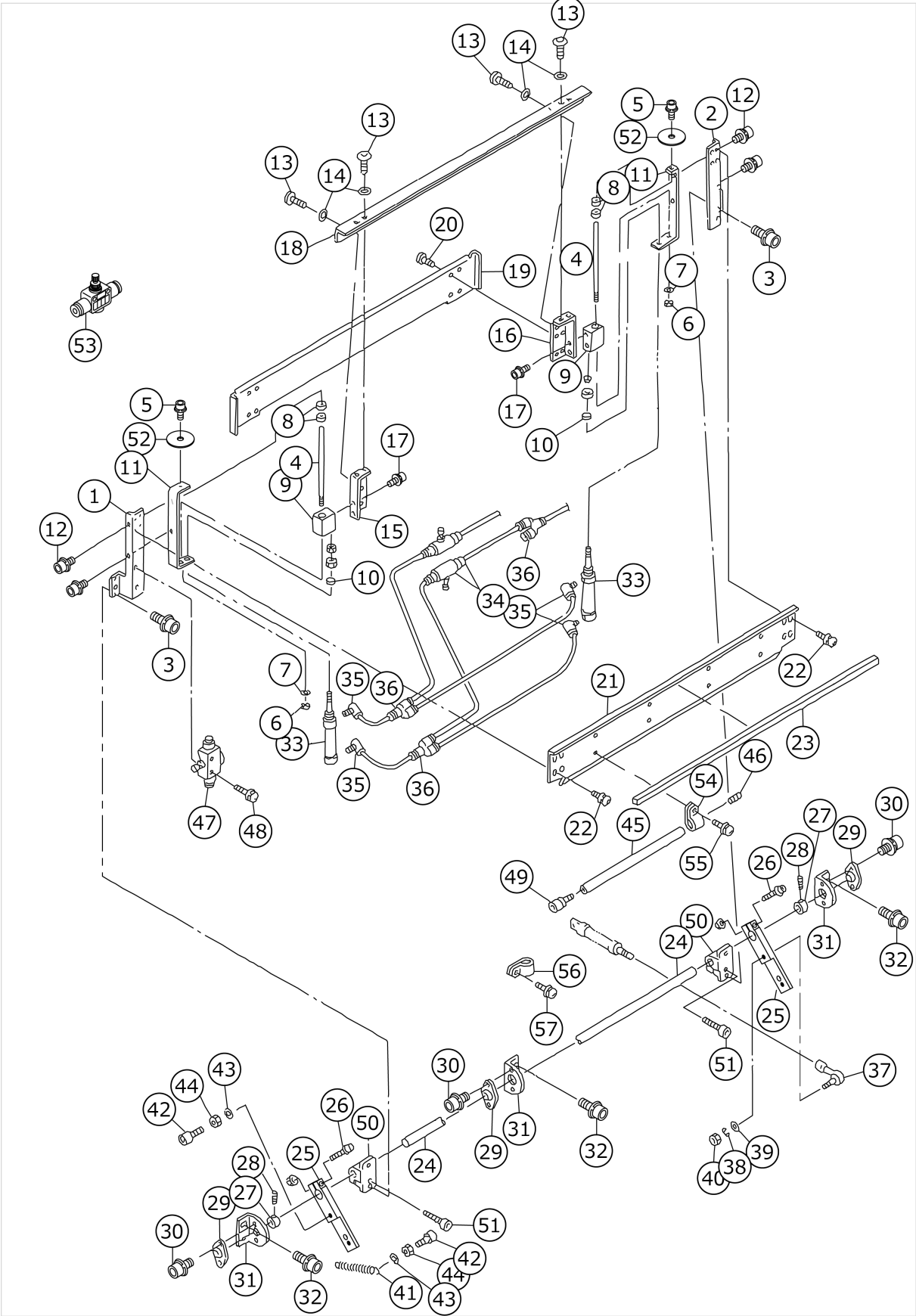
No.	品番	品名	備考	子部品	消耗品	個数
1	G5010164000	FEED RAIL				1.00
2	SL6052042TN	SCREW				14.00
3	WS0510002KN	SPRING WASHER				2.00
4	WP0531001SC	WASHER				2.00
5	NM6050001SC	NUT M5				2.00
6	G5102172000	FEED RAIL SUPPORT, LARGE				2.00
7	G5103172000	FEED RAIL SUPPORT, SMALL				3.00
8	SL6062092TN	SCREW M6 L=20				13.00
9	G5104172000	RAIL FIXING NUT				5.00
10	G5105172000	FITTING PLATE				2.00
11	SL6051442TN	BOLT				2.00
12	G5009172000	STOPPER RUBBER				2.00
13	SL6040842TN	SCREW M4 L=8				2.00
14	40012545	MOTOR_BASE_PLATE				1.00
15	SL6051492TN	BOLT				2.00
16	40016666	CARRIER MOTOR				1.00
17	SM6051802TP	SCREW M5 L=18				4.00
18	WS0510002KN	SPRING WASHER				4.00
19	WP0531001SC	WASHER				4.00
20	40012547	GEAR				1.00
21	SL6032092TN	BOLT				4.00
22	40012546	GEAR_BOSS				1.00
23	SM8060802TP	SCREW M6 L=8				2.00
24	40012548	GEAR_PLATE				1.00
25	40012529	BEARING_BASE				1.00
26	SL6051492TN	BOLT				4.00
27	SB112001100	BEARING				1.00
28	G5139172000	FEED MECHANISM COVER				1.00
29	SL4051091SC	SCREW M5X0.8 L=10				2.00
30	G5110172000	RACK HOLDER FITTING PLATE				1.00
31	SL6052092TN	SCREW				2.00
32	G5111172000	RACK HOLDER				1.00
33	G5150162000	SCREW				1.00
34	SL6031642TN	SCREW				4.00
35	G5153171000	SENSOR PLATE				2.00
36	G5454161000	SPIRAL TUBE				2.00
37	EA9500B0100	CABLE BAND				6.00
38	EA9500B0200	CABLE BAND 150				1.00
39	40016842	CARRIER ORG SENSOR ASSY				1.00
40	40016843	CARRIER DECEL SENSOR ASSY				1.00
41	HX00150000B	CABLE CLIP				2.00
42	SL4040881SC	SCREW M4 L=8				2.00
43	G5108172000	FITTING PLATE				1.00
44	SL6051492TN	BOLT				2.00

## STACKER COMPONENTS (1)



No.	品番	品名	備考	子部品	消耗品	個数
1	G5213172000	PUSHER ROCKING SHAFT				1.00
2	40016101	STACKER_SHAFT_ARM				2.00
3	SM6062502TP	SCREW M6 L=25				2.00
4	16136905	THRUST COVER				2.00
5	SS8660612TP	SCREW 1/4-40 L=6				4.00
6	G5239171000	FLANGE				2.00
7	SL6061292TN	SCREW				4.00
8	G5214172000	ROCKING HOLDER SHAFT BASE				2.00
9	SL6061692TN	BOLT				4.00
10	PA2007508A0	AIR CYLINDER				1.00
11	PC015108000	SPEED CONTROLLER				4.00
12	G52151720A0	PUSHER ROCKING CYLINDER BASE				1.00
13	SL6062092TN	SCREW M6 L=20				2.00
14	G5115172000	ROCKING ARM				1.00
15	SM9082503SE	HEXAGONAL HEADED BOLT				1.00
16	WP0841601SC	WASHER 8.4X17.4X1.6				1.00
17	G5218172000	SWING BAR				1.00
18	SL6061292TN	SCREW				2.00
19	PA2005015A0	AIR CYLINDER				1.00
20	G5216172000	ROCKING FULCRUM SHAFT				2.00
21	RE0700000K0	E-RING 7				2.00
22	G5204171000	LINK BOLL				1.00
23	G5238171000	NUT				1.00
24	WP0841601SC	WASHER 8.4X17.4X1.6				1.00
25	G5219172000	SWING BAR ARM				2.00
26	SL6061292TN	SCREW				4.00
27	G5220172000	SWING BAR SHAFT SPACER				1.00
28	HX00055000C	CABLE CLIP				2.00
29	G52211720A0	CLOTH PILING TABLE				2.00
30	SL6061692TN	BOLT				4.00
31	G5222172000	CUSHION				2.00
32	G5223172000	CLOTH PILING TABLE SUPPORT				2.00
33	G5224172000	CLOTH PILING SUPPORT BOLT				2.00
34	NM6080003SC	NUT M8				6.00
35	WP0841601SC	WASHER 8.4X17.4X1.6				2.00
36	MTJMG000000	RUBBER CUSHION				2.00
37	B1505040000	PRESSER SPRING				2.00
38	WP0651646SC	WASHER				4.00
39	SL6061292TN	SCREW				4.00
40	B1504761A00	ROLLER COLLAR (A)				4.00
41	G5225172000	CLOTH PILING TABLE ROCK NUT				2.00
42	G5226172000	CLOTH PILING TABLE HOLDER				1.00
43	SL6061292TN	SCREW				4.00
44	40016850	STACKER CNT CYL SW ASSY				1.00
45	40016851	STACKER2 CYL SW ASSY				1.00
46	HX00150000B	CABLE CLIP				1.00
47	SL4040881SC	SCREW M4 L=8				1.00
48	HX00065000B	CABLE BAND				1.00

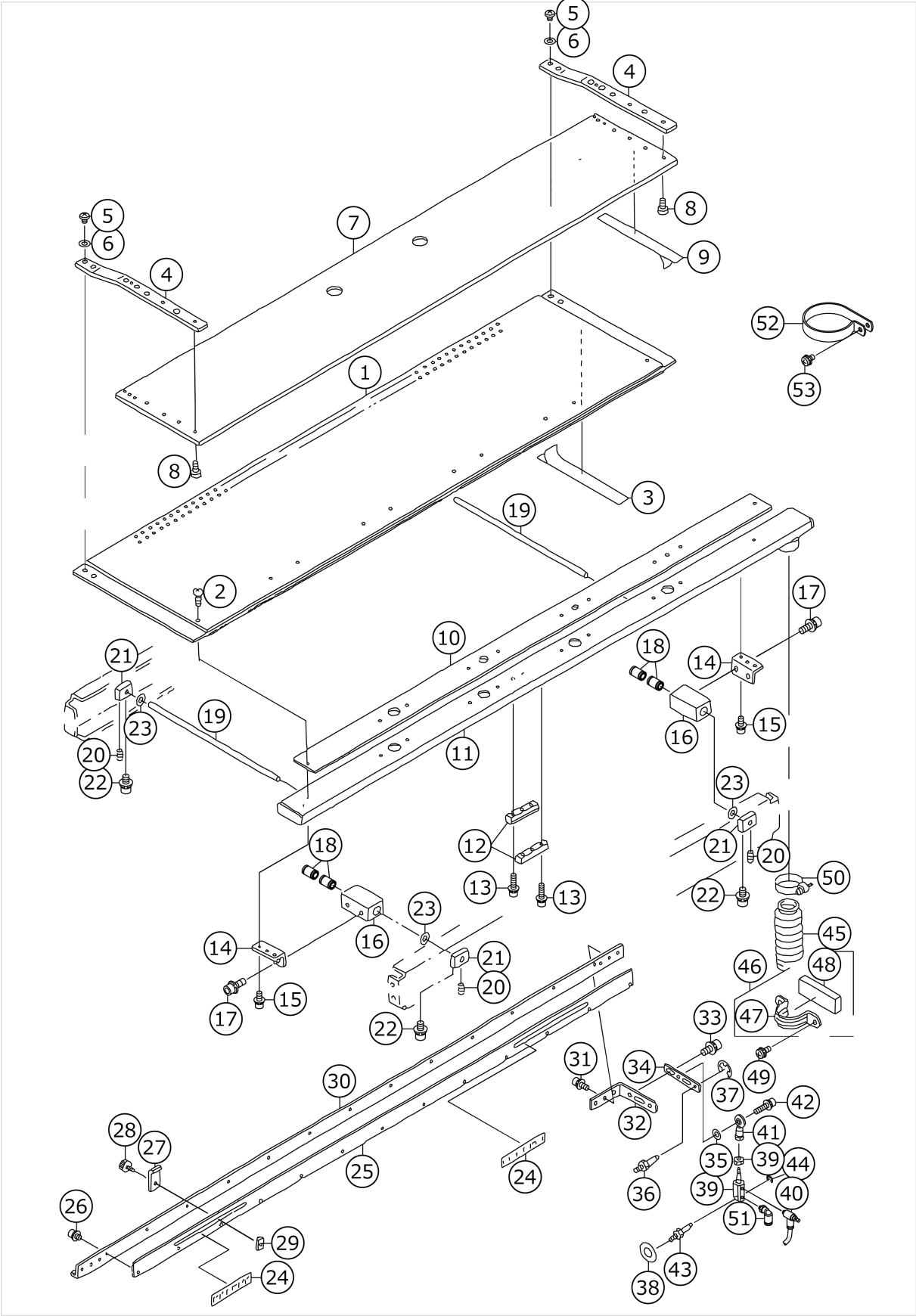
STACKER COMPONENTS (2)



No.	品番	品名	備考	子部品	消耗品	個数
1	G5201172000	PUSHER STUD, LEFT				1.00
2	G5202172000	PUSHER STUD, RIGHT				1.00
3	SL6061692TN	BOLT				4.00
4	G5204172000A	PUSHER SHAFT				2.00
5	SL6041042TN	BOLT				2.00
6	NM6080001SC	NUT M8X1.25				4.00
7	WP0841601SC	WASHER 8.4X17.4X1.6				4.00
8	SB708000100	BEARING				4.00
9	G5205172000	PUSHER SHAFT HOLDING BOX				2.00
10	PA900024000	FLOATING JOINT A				2.00
11	G5203172000A	PUSHER SHAFT BASE				2.00
12	SL6051092TN	BOLT				4.00
13	G5144162000	SCREW				8.00
14	WP0430801SC	WASHER 4.3X9X0.8				8.00
15	G5207172000	PUSHER PLATE, LEFT				1.00
16	G5208172000	PUSHER PLATE, RIGHT				1.00
17	SL6041092TN	SCREW				4.00
18	G5209172000	PUSHER				1.00
19	G5210172000	PUSHER COVER				1.00
20	SM0040601SA	SCREW				8.00
21	G5211172000	PUSHER STAY				1.00
22	SL4040691SC	SCREW M4 L=6				8.00
23	G5212172000	PUSHER CUSHION				1.00
24	G5213172000	PUSHER ROCKING SHAFT				1.00
25	40016101	STACKER_SHAFT_ARM				2.00
26	SM6052502TP	SCREW M5X0.8 L=25				2.00
27	16136905	THRUST COVER				2.00
28	SS8660612TP	SCREW 1/4-40 L=6				4.00
29	G5239171000	FLANGE				3.00
30	SL6061292TN	SCREW				6.00
31	G5214172000	ROCKING HOLDER SHAFT BASE				3.00
32	SL6061692TN	BOLT				6.00
33	PA1008501A0	AIR CYLINDER (DIA10-85ST)				2.00
34	PC012401000	SPEED CONTROLLER				2.00
35	PJ304040504	ELBOW UNION				4.00
36	PJ308040002	QUICK COUPLING				3.00
37	G5204171000	LINK BOLL				1.00
38	WS0820002KN	SPRING WASHER M8				1.00
39	WP0841601SC	WASHER 8.4X17.4X1.6				1.00
40	NM6080001SC	NUT M8X1.25				1.00
41	G5227172000	SPRING				1.00
42	SM6063002TN	SCREW M6 L=30				2.00
43	WP0641601SC	WASHER				2.00
44	NM6060001SC	NUT M6				2.00
45	G5136172000	BLOW PIPE				1.00
46	SM8050812TP	SCREW M5X8				1.00
47	PC012601000	SPEED CONTROLLER				1.00
48	SL4042091SC	SCREW M4X0.7 L=20				1.00
49	PJ032059008	NIPPLE				1.00
50	G5116172000	STUD BRACKET				2.00

51	SM6083002TN	SCREW M8 L=30				2.00
52	WP0451016SP	WASHER 4.5X20X1				2.00
53	PC012401000	SPEED CONTROLLER				1.00
54	HX00150000B	CABLE CLIP				5.00
55	SL4040881SC	SCREW M4 L=8				5.00
56	HX00150000C	CABLE CLIP				1.00
57	SL4040881SC	SCREW M4 L=8				1.00

PRESET COMPONENTS (1)

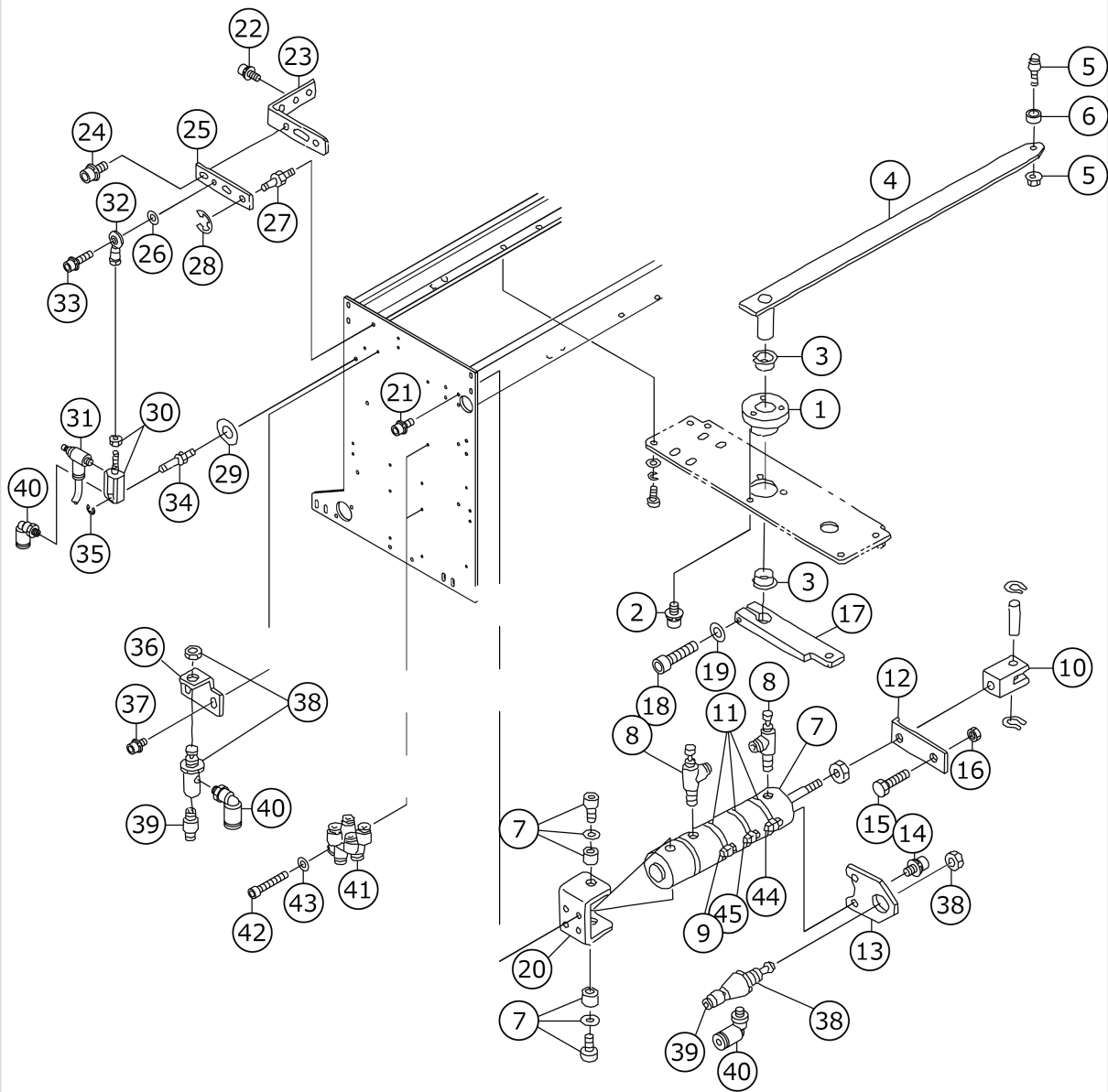


No.	品番	品名	備考	子部品	消耗品	個数
1	G5809172000	PRESET TABLE				1.00
2	SM0041001SC	SCREW M4 L=10				10.00
3	G5302172000	PRESET TABLE LINER				5.00
4	G5303172000	AUXILIARY PRESET PLATE SUPPORT				2.00
5	SM4040801SN	SCREW M4 L=8				4.00
6	WP0430801SC	WASHER 4.3X9X0.8				4.00
7	G5304172000	AUXILIARY PRESET PLATE				1.00
8	SM6020350SP	SCREW M2 L=2.5				6.00
9	G5305172000	AUXILIARY PRESET LINER				5.00
10	G5306172000	PRESET PACKING				1.00
11	G53071720A0	PRESET FITTING PLATE				1.00
12	G5308172000	CAM FOLLOWER RAIL				2.00
13	SL6041642TN	SCREW				6.00
14	G5309172000	SHAFT HOLDING BOX SUPPORT				2.00
15	SL6041092TN	SCREW				6.00
16	G5310172000	SLIDE SHAFT HOLDING BOX				2.00
17	SL6051492TN	BOLT				4.00
18	SB710000200	SLIDE BEARING				4.00
19	G5311172000	SLIDE SHAFT				2.00
20	SM8050602TP	SCREW M5 L=6				4.00
21	G5312172000	SLIDE SHAFT SUPPORT				4.00
22	SL6051092TN	BOLT				8.00
23	G5313172000	SLIDE SHAFT RUBBER				4.00
24	G5352171000A	SCALE, RIGHT				2.00
25	G5334172000	SET PLATE				1.00
26	SL6040642TN	BOLT				10.00
27	G5808172000	GAUGE				2.00
28	G6010003000	KNOB SCREW				2.00
29	G5810172000	GAUGE NUT				2.00
30	G5335172000	SET PLATE SUPPORT				1.00
31	SL6041092TN	SCREW				2.00
32	G5336172000	SET PLATE SUPPORT ARM				1.00
33	SL6051292TN	BOLT				2.00
34	G5337172000	SET PLATE FULCRUM ARM				1.00
35	WP0430800SC	WASHER M4				1.00
36	G5216172000	ROCKING FULCRUM SHAFT				1.00
37	RE0700000K0	E-RING 7				1.00
38	WP0621016SH	WASHER				1.00
39	PA1001016A0	AIR CYLINDER (DIA10-10ST)				1.00
40	PC010508000	SPEED CONTROLLER				1.00
41	16556300	ROD END				1.00
42	SL6041642TN	SCREW				1.00
43	G5338172000	SET PLATE CYLINDER SHAFT				1.00
44	RE0300000K0	E-RING 3				1.00
45	G5343172000	VACUUM HOSE, A				1.00
46	G53461720A0	HOSE HOLDER ASM.				1.00
47	G5346172000	HOSE HOLDER		*		1.00
48	G5904172000	HOSE HOLDER RUBBER		*		1.00
49	SL4041091SC	SCREW M4 L=10				2.00
50	G5176136000	HOSE BAND				1.00



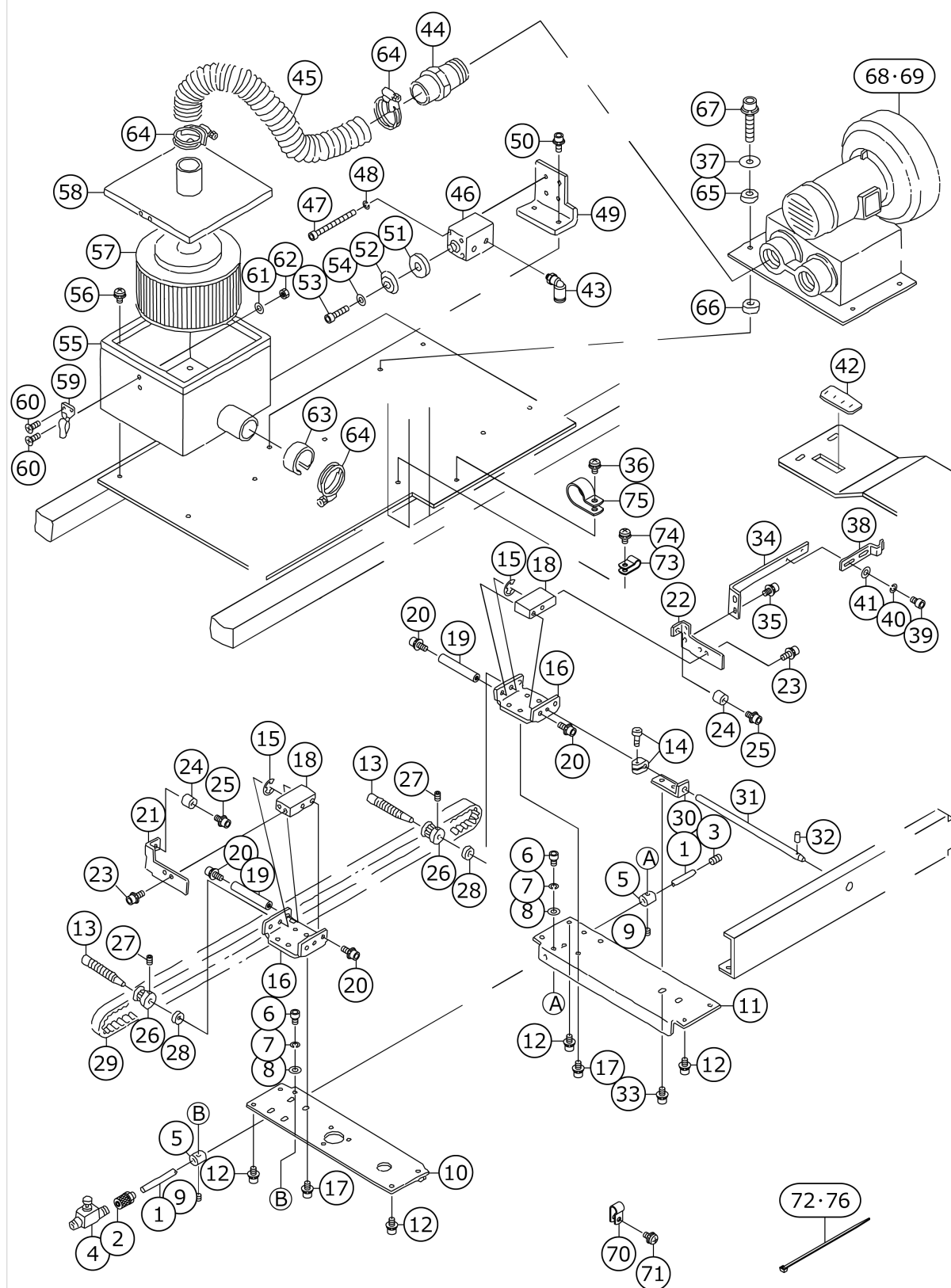
51	PJ304040504	ELBOW UNION				1.00
52	HX00150000S	CABLE BAND				1.00
53	SL4040881SC	SCREW M4 L=8				1.00

PRESET COMPONENTS (2)



No.	品番	品名	備考	子部品	消耗品	個数
1	G5314172000	PRESET SHAFT HOLDING BOX				1.00
2	SL6051092TN	BOLT				3.00
3	G5315172000	PRESET SHAFT HOLDER				2.00
4	G53161720A0	PRESET DRIVING ARM				1.00
5	13741806	CHANGE-OVER ROLLER				1.00
6	11041100	ROLLER				1.00
7	PA320500200	AIR CYLINDER (DIA32-50ST)				1.00
8	PC015108000	SPEED CONTROLLER				2.00
9	40016848	PRESET CYL BKWD SW ASSY				1.00
10	PA900042000	KNUCKLE JOINT				1.00
11	PX906004000	SWITCH CLAMP (DIA32)				3.00
12	G5341172000	RETURN VALVE DOG				1.00
13	G5342172000	RETURN VALVE FITTING PLATE				1.00
14	SL6051092TN	BOLT				2.00
15	SM9052003SC	SCREW M5 L=20				1.00
16	NM6050003SC	NUT M5X0.8				1.00
17	G5317172000	PRESET CYLINDER ARM				1.00
18	SM6062502TP	SCREW M6 L=25				1.00
19	WP0641601SC	WASHER				1.00
20	G5318172000	PRESET CYLINDER BASE				1.00
21	SL6041292TN	SCREW				4.00
22	SL6041092TN	SCREW				2.00
23	G5336172000	SET PLATE SUPPORT ARM				1.00
24	SL6051292TN	BOLT				2.00
25	G5337172000	SET PLATE FULCRUM ARM				1.00
26	WP0430800SC	WASHER M4				1.00
27	G5216172000	ROCKING FULCRUM SHAFT				1.00
28	RE0700000K0	E-RING 7				1.00
29	WP0621016SH	WASHER				1.00
30	PA1001016A0	AIR CYLINDER (DIA10-10ST)				1.00
31	PC010508000	SPEED CONTROLLER				1.00
32	16556300	ROD END				1.00
33	SL6041642TN	SCREW				1.00
34	G5338172000	SET PLATE CYLINDER SHAFT				1.00
35	RE0300000K0	E-RING 3				1.00
36	GMC16007000	START VALVE FITTING PLATE				1.00
37	SL6040892TN	BOLT				2.00
38	PV010503000	VALVE				2.00
39	PJ301040502	HALF UNION 4XM5				2.00
40	PJ304040504	ELBOW UNION				3.00
41	PJ308040002	QUICK COUPLING				4.00
42	SM6042502TP	SCREW M4X0.7 L=25				2.00
43	WP0430801SC	WASHER 4.3X9X0.8				2.00
44	40016846	PRESET CYL FWD SW ASSY				1.00
45	40016847	PRESET CYL MID SW ASSY				1.00

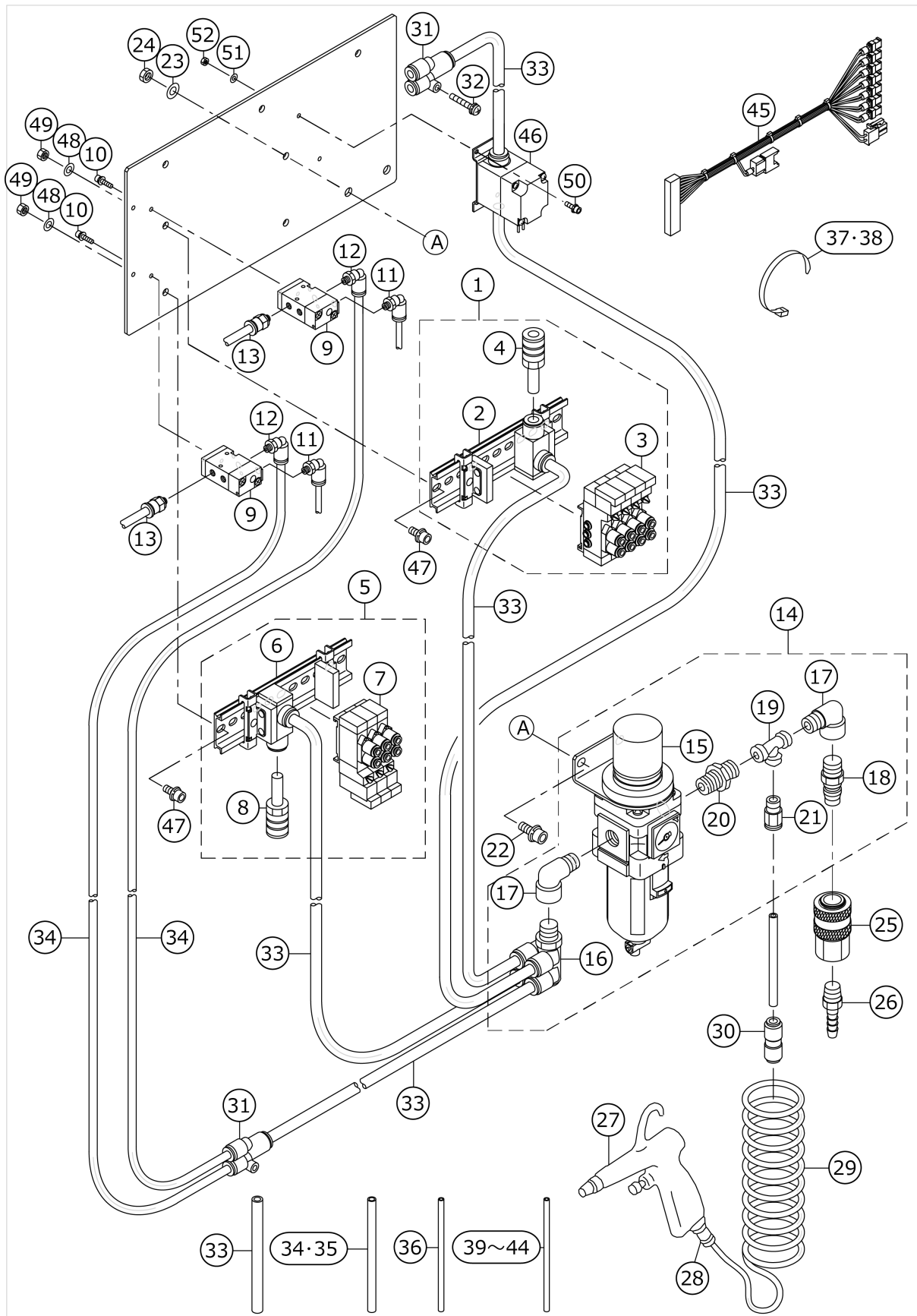
## PRESET COMPONENTS (3)



No.	品番	品名	備考	子部品	消耗品	個数
1	G5136172000	BLOW PIPE				1.00
2	PJ032059008	NIPPLE				1.00
3	SM8050812TP	SCREW M5X8				1.00
4	PC012601000	SPEED CONTROLLER				1.00
5	G5137172000	BLOW PIPE HOLDER				2.00
6	SM6040602TP	SCREW M4 L=6				2.00
7	WS0410002KN	SPRING WASHER				2.00
8	WP0430801SC	WASHER 4.3X9X0.8				2.00
9	SM8040402TP	SCREW M4X0.7 L=4				2.00
10	G5319172000	HOLDING BASE, LEFT				1.00
11	G5320172000	HOLDING BASE, RIGHT				1.00
12	SL6040892TN	BOLT				8.00
13	G5322172000	PRESET ADJUSTING SHAFT				2.00
14	B25198500A0	LOOPER CONNECTING ROD TRUST AS				1.00
15	RE0600000K0	E-RING 6				2.00
16	G5321172000A	PRESET ADJUSTING SHAFT HOLDER				2.00
17	SL6040892TN	BOLT				8.00
18	G5323172000	PRESET ADJUSTING NUT				2.00
19	G5324172000A	PRESET ADJUSTING NUT GUIDE				2.00
20	SL6041092TN	SCREW				4.00
21	G5325172000	PRESET STOPPER, LEFT				1.00
22	G5326172000	PRESET STOPPER, RIGHT				1.00
23	SL6041092TN	SCREW				4.00
24	G5009172000	STOPPER RUBBER				2.00
25	SL6040842TN	SCREW M4 L=8				2.00
26	G5327172000	PRESET ADJUSTING PULLEY				2.00
27	SM8040602TP	SCREW M4X0.7 L=6				4.00
28	G5328172000	PULLEY SPACER				2.00
29	G5329172000	PRESET ADJUSTING BELT				1.00
30	G5330172000	EXTENSION SHAFT SUPPORT				1.00
31	G5331172000	ADJUSTING EXTENSION SHAFT				1.00
32	PS0300162KH	SPRING PIN 3X16				1.00
33	SL6040892TN	BOLT				2.00
34	G5332172000	PRESET CHARACTERISTIC SUPPORT				1.00
35	SL6040892TN	BOLT				2.00
36	SL4040881SC	SCREW M4 L=8				1.00
37	WP0651646SC	WASHER				4.00
38	G5333172000	PRESET CHARACTERISTIC				1.00
39	SM6040602TP	SCREW M4 L=6				2.00
40	WS0410002KN	SPRING WASHER				2.00
41	WP0430801SC	WASHER 4.3X9X0.8				2.00
42	G5309164000	SCALE				1.00
43	PJ304040504	ELBOW UNION				1.00
44	G5345172000	BLOWER JOINT				1.00
45	G5344172000	VACUUM HOSE, B				1.00
46	PA160100500	AIR CYLINDER				1.00
47	SM6033052TP	SCREW				4.00
48	WS0310002KN	SPRING WASHER M3				4.00
49	GMC16003000	VACUUM CYLINDER				1.00
50	SL6041092TN	SCREW				2.00

51	GMC16004000	VACUUM CHANGE CYLINDER BOSS				1.00
52	G5229171000	STOPPOR RUBBER				1.00
53	SM6041602TP	SCREW M4X0.7 L=16				1.00
54	WP0430801SC	WASHER 4.3X9X0.8				1.00
55	GMC160010A0	FILTER BOX ASM.				1.00
56	SL4040891SC	SCREW M4 L=8				4.00
57	GMC10004000	FILTER ELEMENT				1.00
58	GMC100050A0	TOP COVER ASM.				1.00
59	GMC10007000	METAL FITTINGS				2.00
60	SM1030801SC	SCREW M3 L=8				8.00
61	WP0320501SC	WASHER M3				4.00
62	NM6030001SC	NUT M3				4.00
63	G5171136000	VACUUM CONTROL PLATE				1.00
64	G5176136000	HOSE BAND				3.00
65	B4420373000	CUSHION				4.00
66	B1123205000	RUBBER PAD				4.00
67	SL6063042TN	BOLT				4.00
68	G6951172BA0	HITACHI POWER CORD COMPL.				1.00
69	G6951172CA0	HITACHI POWER CORD COMPL.				1.00
70	HX00150000B	CABLE CLIP				7.00
71	SL4040881SC	SCREW M4 L=8				7.00
72	EA9500B0100	CABLE BAND				38.00
73	HX00150000B	CABLE CLIP				2.00
74	SL4040881SC	SCREW M4 L=8				2.00
75	HX00150000K	CABLE CLIP				1.00
76	EA9500B0200	CABLE BAND 150				20.00

# AIR COMPONENTS

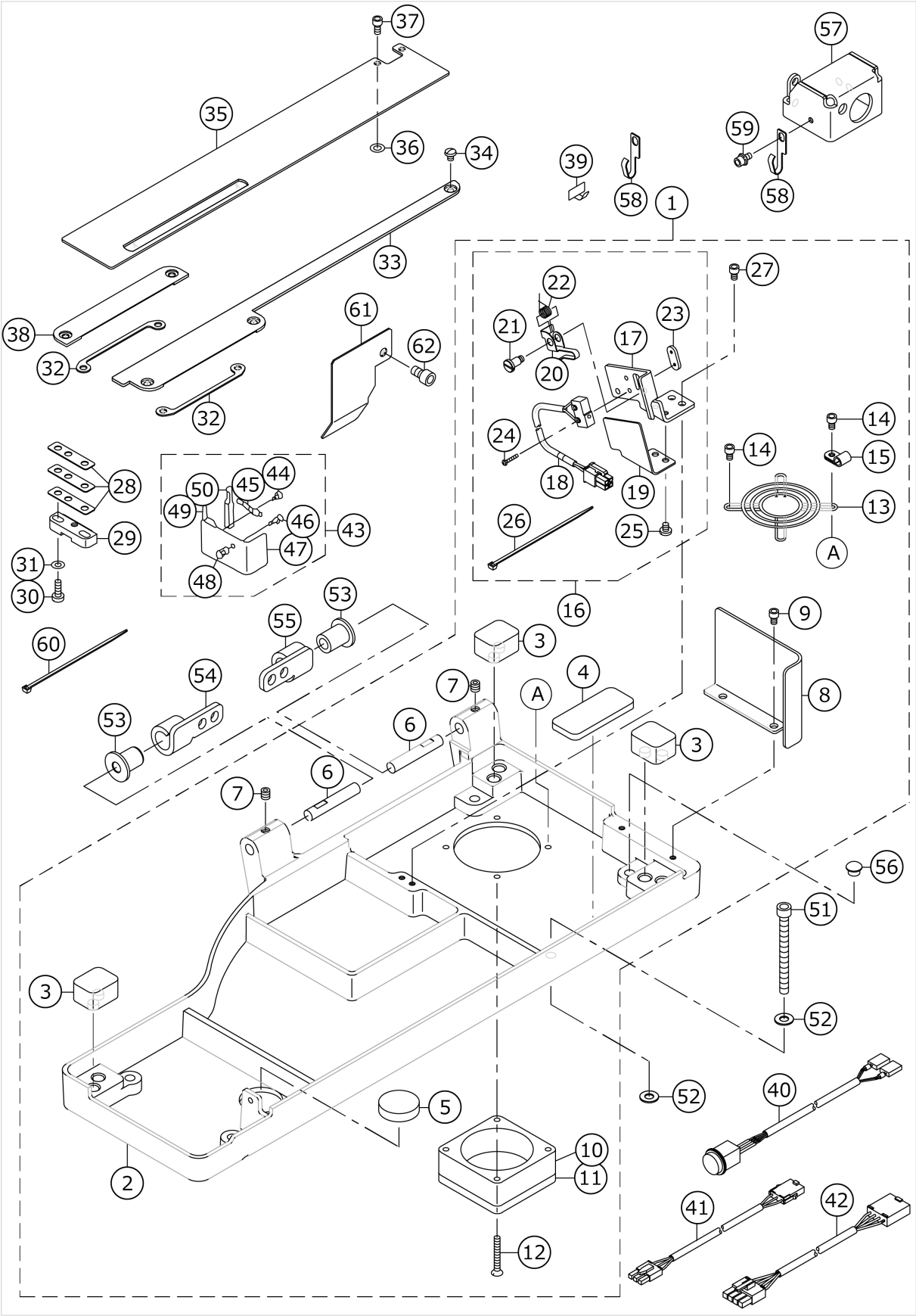


No.	品番	品名	備考	子部品	消耗品	個数
1	E41507290A0	ELECTROMAGNETIC VALVE A ASM.				1.00
2	PV915005000	SOLENOID VALVE INSTALLING BASE		*		1.00
3	PV150209300	5 PORT ELECTROMAGNETIC VALVE		*		4.00
4	PX050003000	SILENCER		*		1.00
5	40000916	MANIFOLD VALVE A ASM				1.00
6	PV915005000	SOLENOID VALVE INSTALLING BASE		*		1.00
7	PV150209300	5 PORT ELECTROMAGNETIC VALVE		*		3.00
8	PX050003000	SILENCER		*		1.00
9	PV130536000	AIR OPERATE VALVE				2.00
10	SL6031292TN	BOLT				4.00
11	PJ304040504	ELBOW UNION				2.00
12	PJ304060502	ELBOW UNION 6XM5				2.00
13	PJ301060503	HALF UNION				2.00
14	40014272	ASSY_REGULATOR				1.00
15	PF0552160A0	FILTER REGULATOR		*		1.00
16	PJ309085202	DOUBLE BRANCH UNIVERSAL ELBOW		*		1.00
17	PJ042520001	ELBOW		*		2.00
18	PJ025200004	PLUG		*		1.00
19	PJ050525201	TEE		*		1.00
20	PJ030520001	RING JOINT (NIPPLE)		*		1.00
21	PJ301065201	HALF UNION 6XPT1/4		*		1.00
22	SL6061692TN	BOLT				2.00
23	WP0641601SC	WASHER				2.00
24	NM6060003SC	NUT M6				2.00
25	PJ309005204	SOCKET				1.00
26	PJ032526001	HOSE NIPPLE				1.00
27	16111403	AIR GUN				1.00
28	16111502	SOCKET				1.00
29	G5458116000	CURLED TUBE				1.00
30	PJ303060001	STRAIGHT UNION				1.00
31	PJ308080003	Y-UNION				2.00
32	SL4042581SC	SCREW				1.00
33	BT0800501EB	VINYL TUBE				1.00
34	BT0600401E0	TUBE				10.00
35	BT0600401EB	TUBE				10.00
36	BT0400251EB	URETHANE HOSE, BLACK				10.50
37	HX00065000B	CABLE BAND				4.00
38	HX002920000	BAND				4.00
39	BT0400251E0	TUBE HOSE, CLEAR				6.00
40	BT0400251EH	TUBE HOSE, YELLOWISH				6.00
41	BT0400251EA	TUBE HOSE, BLUE				6.00
42	BT0400251ED	TUBE HOSE, GREEN				6.00
43	BT0400251EE	TUBE HOSE, RED				6.00
44	BT0400251EC	TUBE HOSE, YELLOW				6.00
45	40016684	AIR VALVE CORD ASSY				1.00
46	40016685	AIR BLOW VALVE ASSY				1.00
47	SL6051292TN	BOLT				4.00
48	WP0531001SC	WASHER				4.00
49	NM6050001SC	NUT M5				4.00
50	SL6031092TN	SCREW				2.00



51	WP0320501SC	WASHER M3				2.00
52	NM6030001SC	NUT M3				2.00

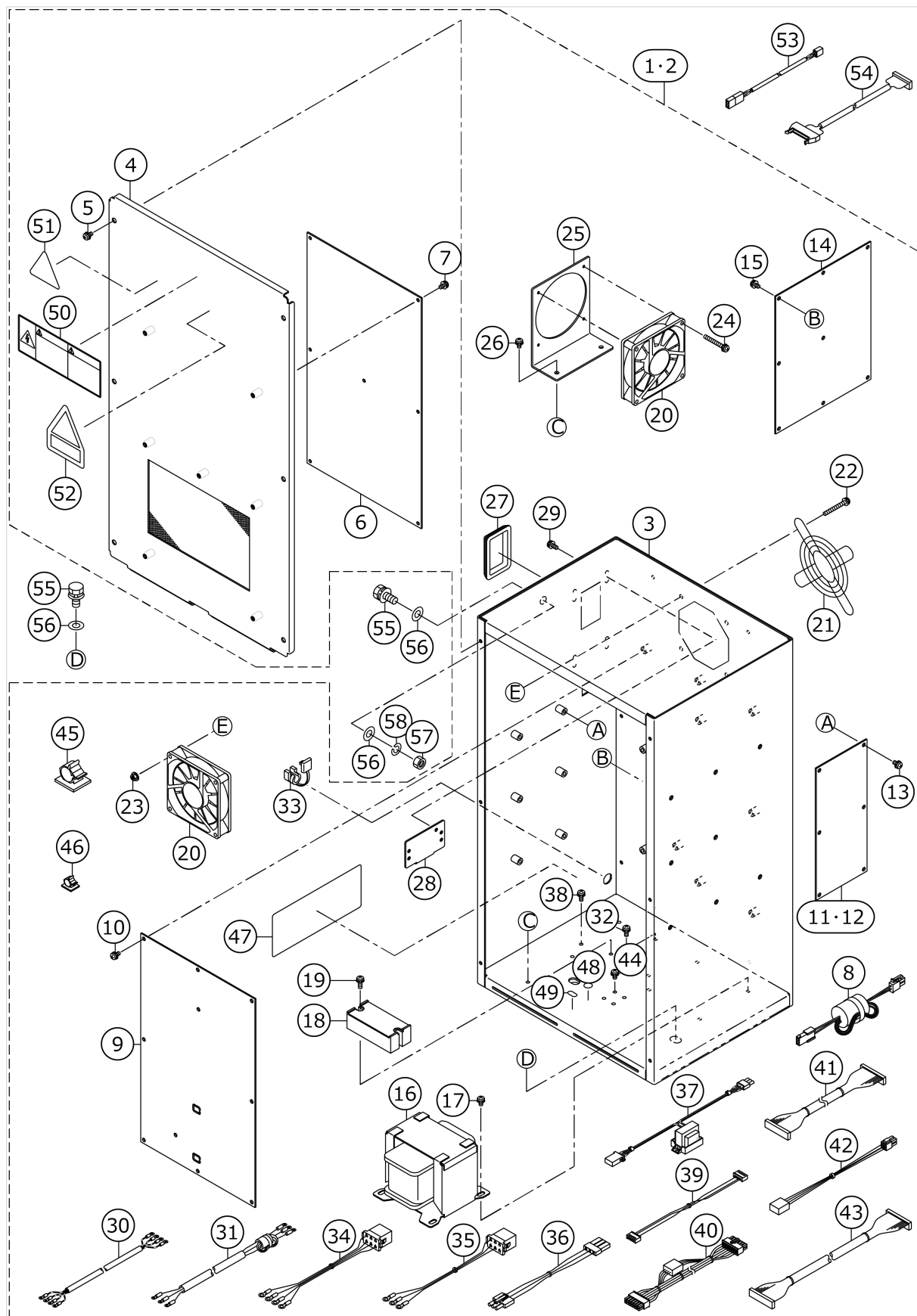
FRAME COMPONENTS



No.	品番	品名	備考	子部品	消耗品	個数
1	40015224	ASSY_BED_BASE_ACF				1.00
2	40015141	BED_BASE_ACF		*		1.00
3	40008977	RUBBER C		*		3.00
4	40008978	RUBBER D		*		1.00
5	E2002855000	Z STOPPER RUBBER		*		1.00
6	13700604	HINGE PIN		*		2.00
7	SM8060612TP	SCREW M6 L=6		*		2.00
8	40004160	BED_REAR_COVER		*		1.00
9	SM6040602TP	SCREW M4 L=6		*		2.00
10	40005403	HEAD FAN MOTOR B ASS'Y		*		1.00
11	HM000550010	FILTER		*		1.00
12	SM1043001SP	SCREW M4X0.7 L=30		*		2.00
13	HM0003800A0	FINGER GUARD		*		1.00
14	SM6040602TP	SCREW M4 L=6		*		2.00
15	HX00150000A	CABLE CLAMP		*		1.00
16	40003495	SAFETY SWITCH ASS'Y		*		1.00
17	14516603	SAFETY SW BASE		*		1.00
18	40003496	SAFETY SWITCH CORD ASS'Y		*		1.00
19	14516900	SAFETY SWITCH COVER		*		1.00
20	23638109	SAFETY SWITCH ARM		*		1.00
21	23638307	SAFETY SWITCH ARM SHAFT		*		1.00
22	23638208	SAFETY SWITCH SPRING		*		1.00
23	23638406	SAFETY SWITCH NUT		*		1.00
24	SM4021201SC	SCREW M2 L=12		*		2.00
25	SS7090520SP	SCREW 9/64-40 L= 4.5		*		2.00
26	EA9500B0100	CABLE BAND		*		1.00
27	SM6040602TP	SCREW M4 L=6		*		2.00
28	40004326	BTT_SPACER				3.00
29	40004325	POSITIONING_PLATE_BASE				1.00
30	SM6041200SP	SCREW M4 L=12				2.00
31	WP0430801SE	WASHER 4.3X9X0.8				2.00
32	40011319	THROAT_PLATE_BASE_SPACER				2.00
33	40011317	CARRIER_GUIDE_ACF				1.00
34	SM5040550TP	SCREW M4 L=5				1.00
35	40011320	WORK_CLAMP_CARRIER_ACF				1.00
36	WP0531000SF	WASHER M5				2.00
37	SM6040802TP	SCREW M4X0.7 L=8				2.00
38	40011318	THROAT_PLATE_BASE_COVER_ACF				1.00
39	HX005210000	STICKER				2.00
40	40017014	PRESET LEDSW ASSY				1.00
41	40005710	SERVO MOTOR S CODE ASM.				1.00
42	40005711	SERVO MOTOR P CODE ASM.				1.00
43	13903356	HOOK COVER COMPL. (ACH)				1.00
44	SS4110515SP	SCREW 11/64-40 L=5		*		1.00
45	13704002	HINGE SPRING		*		1.00
46	SL4030881SF	SCREW M3 L=8		*		1.00
47	13903307	HOOK COVER (ACH)		*		1.00
48	13778600	HOOK COVER KNOB		*		1.00
49	13703905	HINGE PIN		*		1.00
50	13703806	HOOK OIL SHIELD HINGE		*		1.00

51	SM6066052TP	SCREW M6 L=60				1.00
52	WP0621016SH	WASHER				2.00
53	40006314	HINGE_BUSH				2.00
54	13700505	HINGE PLATE, B				1.00
55	13700406	HINGE PLATE, A				1.00
56	TA0800504R0	PLUG D=8 L=4.5				1.00
57	40011893	SWITCH_COVER				1.00
58	26230409	LUBRICATING OIL WICK STOPPER				3.00
59	SL6040892TN	BOLT				1.00
60	EA9500B0100	CABLE BAND				1.00
61	40011013	HOOK_OIL_COVER				1.00
62	SM6061002TP	SCREW M6 L=10				1.00

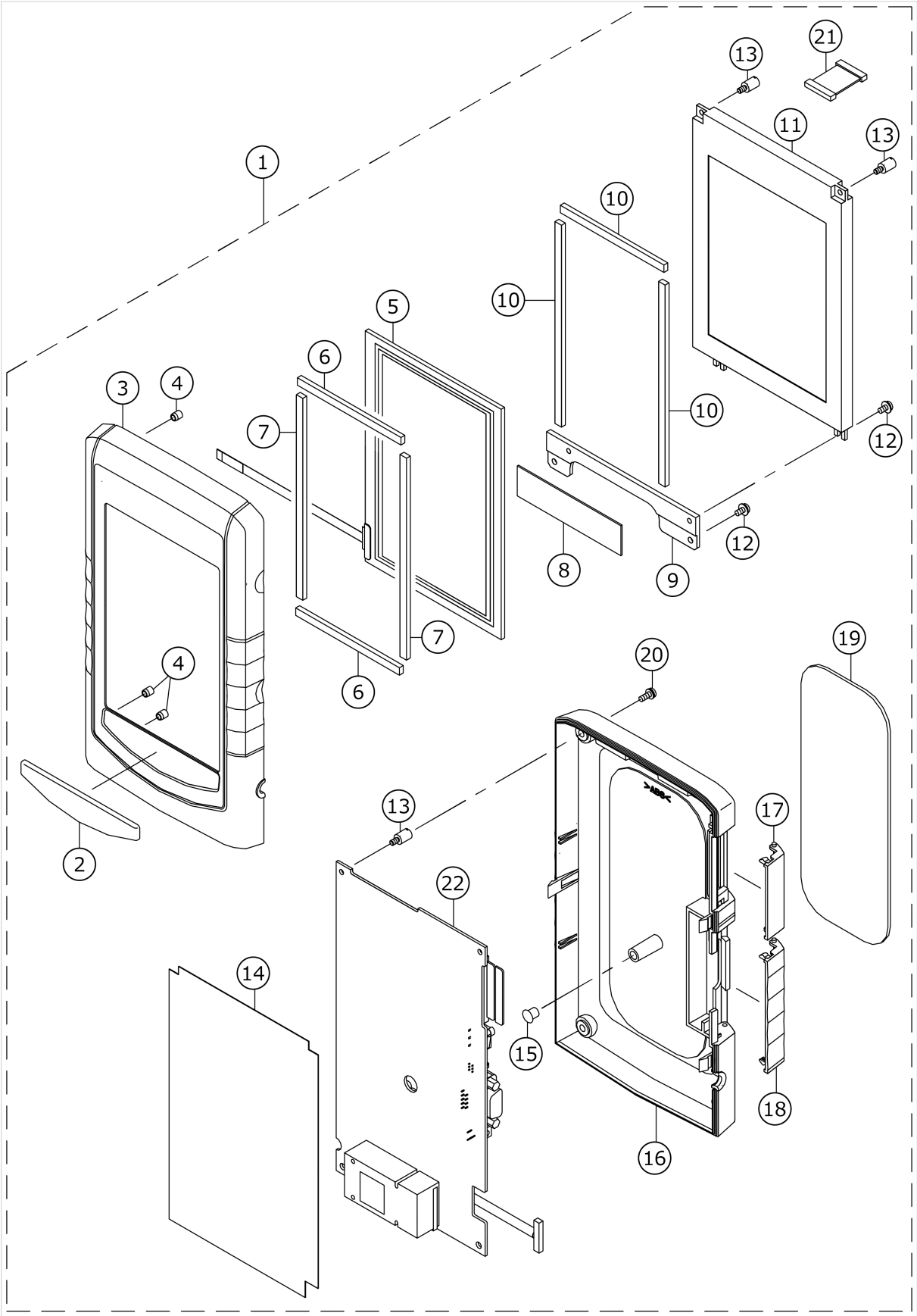
# CONTROL BOX COMPONENTS



No.	品番	品名	備考	子部品	消耗品	個数
1	40016393	CONTROL BOX A ASSY	FOR USE IN JAP AN/EXPORT 3			1.00
2	40016394	CONTROL BOX B ASSY	FOR EXPORT 1			1.00
3	40015601	CONTROL BOX		*		1.00
4	40015602	CONTROL BOX FRONT COVER		*		1.00
5	SL4040891SC	SCREW M4 L=8		*		6.00
6	40015556	MAIN PCB B ASSY		*		1.00
7	SL4040881SC	SCREW M4 L=8		*		7.00
8	40018093	TRANS JOINT CORD ASSY		*		1.00
9	40000029	SDC PCB A ASS'Y		*		1.00
10	SL4040881SC	SCREW M4 L=8		*		10.00
11	40000056	FLT-T PCB A ASS'Y	FOR USE IN JAP AN/EXPORT 3	*		1.00
12	40000046	FLT-S PCB A ASS'Y	FOR EXPORT 1	*		1.00
13	SL4040881SC	SCREW M4 L=8		*		6.00
14	40015534	I/O PCB ASSY		*		1.00
15	SL4040881SC	SCREW M4 L=8		*		8.00
16	40015554	POWER TRANSFORMER		*		1.00
17	SL4040891SC	SCREW M4 L=8		*		4.00
18	HK026650040	TERMINAL STAND		*		1.00
19	SL4041281SC	SCREW M4X0.7 L=12		*		2.00
20	40005401	FAN MOTOR ASS'Y		*		2.00
21	HM000480010	FINGER GUARD		*		1.00
22	SL4043591SC	SCREW		*		4.00
23	NM3040520SC	NUT M4		*		4.00
24	SL4033091SC	SCREW M3 L=30		*		4.00
25	40005404	FAN MOTOR BRACKET		*		1.00
26	SL4040891SC	SCREW M4 L=8		*		2.00
27	HX004070000	BUSH		*		2.00
28	17845009	CORD FITTING PLATE		*		2.00
29	SL4041091SC	SCREW M4 L=10		*		4.00
30	40015609	POWER CORD 3P ASSY	FOR USE IN JAP AN/EXPORT 3	*		1.00
31	40015610	POWER CORD 1P ASSY	FOR EXPORT 1	*		1.00
32	SL4041081SC	SCREW M4 L=10	FOR EXPORT 1	*		1.00
33	HX00410000A	STRAIN RELIEF BUSHING		*		1.00
34	40015606	FLT INPUT CORD 3P ASSY	FOR USE IN JAP AN/EXPORT 3	*		1.00
35	40015607	FLT INPUT CORD 1P ASSY	FOR EXPORT 1	*		1.00
36	40005393	FLT-SDC CORD P ASS'Y	FOR USE IN JAP AN/EXPORT 3	*		1.00
37	40012038	REACTOR CORD ASSY	FOR EXPORT 1	*		1.00
38	SL4041091SC	SCREW M4 L=10	FOR EXPORT 1	*		2.00
39	40005394	FLT-SDC CORD S ASS'Y		*		1.00
40	40015617	SDC-MAIN CORD P ASSY		*		1.00
41	40015618	SDC-MAIN CORD S ASSY		*		1.00
42	40015608	I/O POWER CORD ASSY		*		1.00
43	40016401	MAIN-I/O CORD ASSY		*		1.00
44	SL4040891SC	SCREW M4 L=8		*		4.00
45	E9609603000	STICKER (LARGE)		*		3.00

46	E9607603000	STICKER (SMALL)		*		2.00
47	40015603	RATING LABEL (BLANK)		*		1.00
48	E9567319000	EARTH MARK		*		1.00
49	CM200100001	PE MARK LABEL	FOR EXPORT 1	*		1.00
50	CM300100401	LABEL 3 (LARGE)	FOR USE IN JAP AN/EXPORT 3	*		1.00
51	CM300100003	VOLTAGE WARNING LABEL(25)	FOR EXPORT 1	*		1.00
52	CM300400601	VOLTAGE CAUTION LABEL		*		1.00
53	40017821	HEAD FAN JOINT CORD ASSY				1.00
54	40017822	PANEL JOINT CORD ASSY	FOR IP-200			1.00
55	SL9082093SE	SCREW				3.00
56	WP0841601SC	WASHER 8.4X17.4X1.6				4.00
57	NM6080001SC	NUT M8X1.25				1.00
58	WS0820002KN	SPRING WASHER M8				1.00

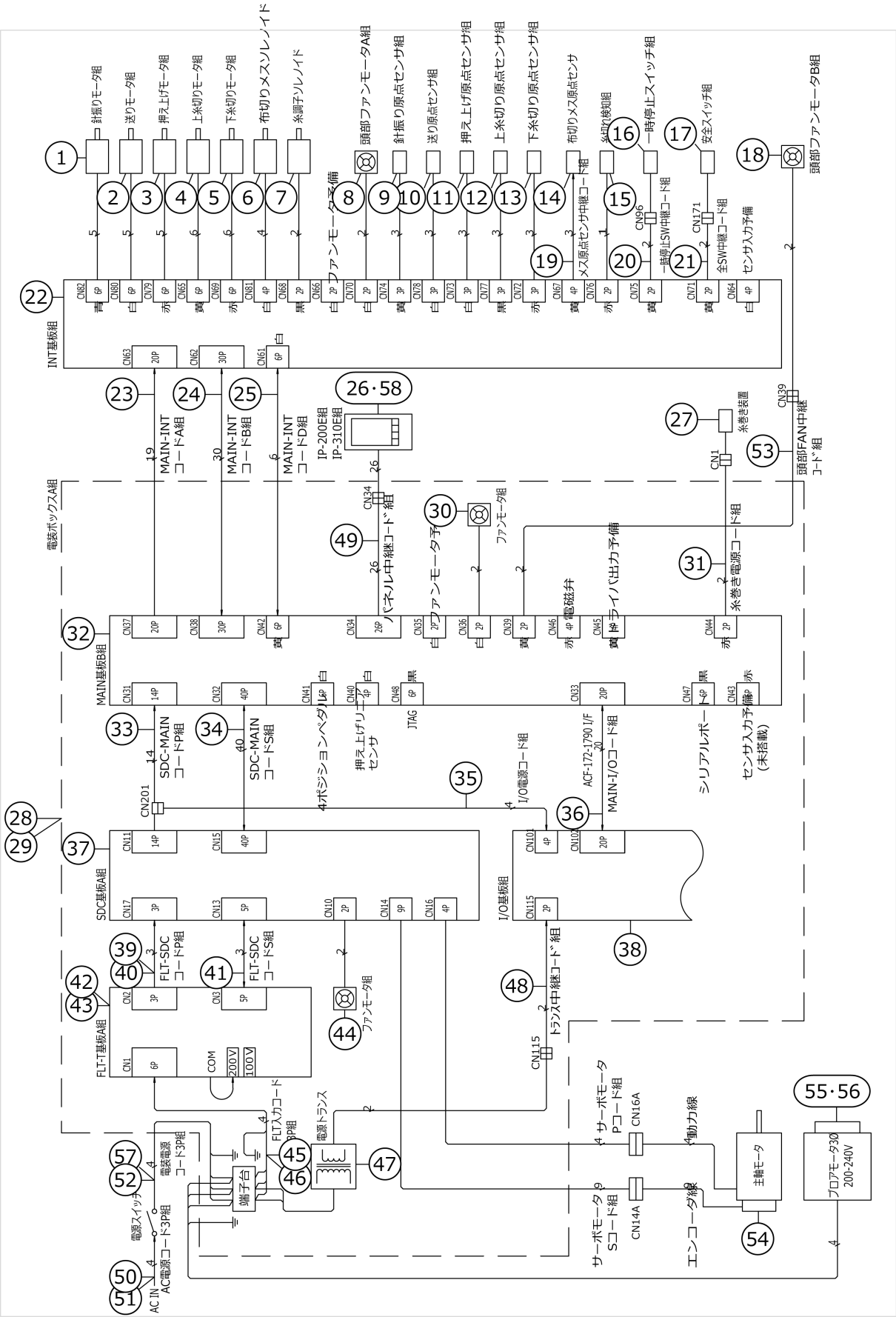
OPERATION PANEL COMPONENTS





No.	品番	品名	備考	子部品	消耗品	個数
1	40016643	IP-200E ASSY				1.00
2	40000131	NAME_PLATE		*		1.00
3	40000132	OPERATION_PANEL_F		*		1.00
4	40000133	INSERT_NUT		*		6.00
5	A3906010000	TOUCH PANEL		*		1.00
6	40000134	TTP_H_FELT		*		2.00
7	40000135	TTP_V_FELT		*		2.00
8	40000136	KEY_SHEET		*		1.00
9	40000137	LCD_BASE_PLATE		*		1.00
10	40000138	BOTHSIDES_TAPE		*		3.00
11	A39500100A0	LCD		*		1.00
12	SL4030691SC	SCREW M3X6		*		4.00
13	40000139	STUD		*		6.00
14	40000140	ISOLATION_SHEET		*		1.00
15	TA0550604R0	RUBBER PLUG		*		1.00
16	40000141	OPERATION_PANEL_R		*		1.00
17	40000142	SM_COVER		*		1.00
18	40000143	SERIAL_COVER		*		1.00
19	40000144	OPERATION_PANEL_MAGNET		*		1.00
20	SL4030881SC	SCREW M3X8		*		4.00
21	40000146	LCD_CABLE_ASS'Y		*		1.00
22	40000148	PANEL_PCB_A_ASS'Y		*		1.00

WIRING DIAGRAM (1)



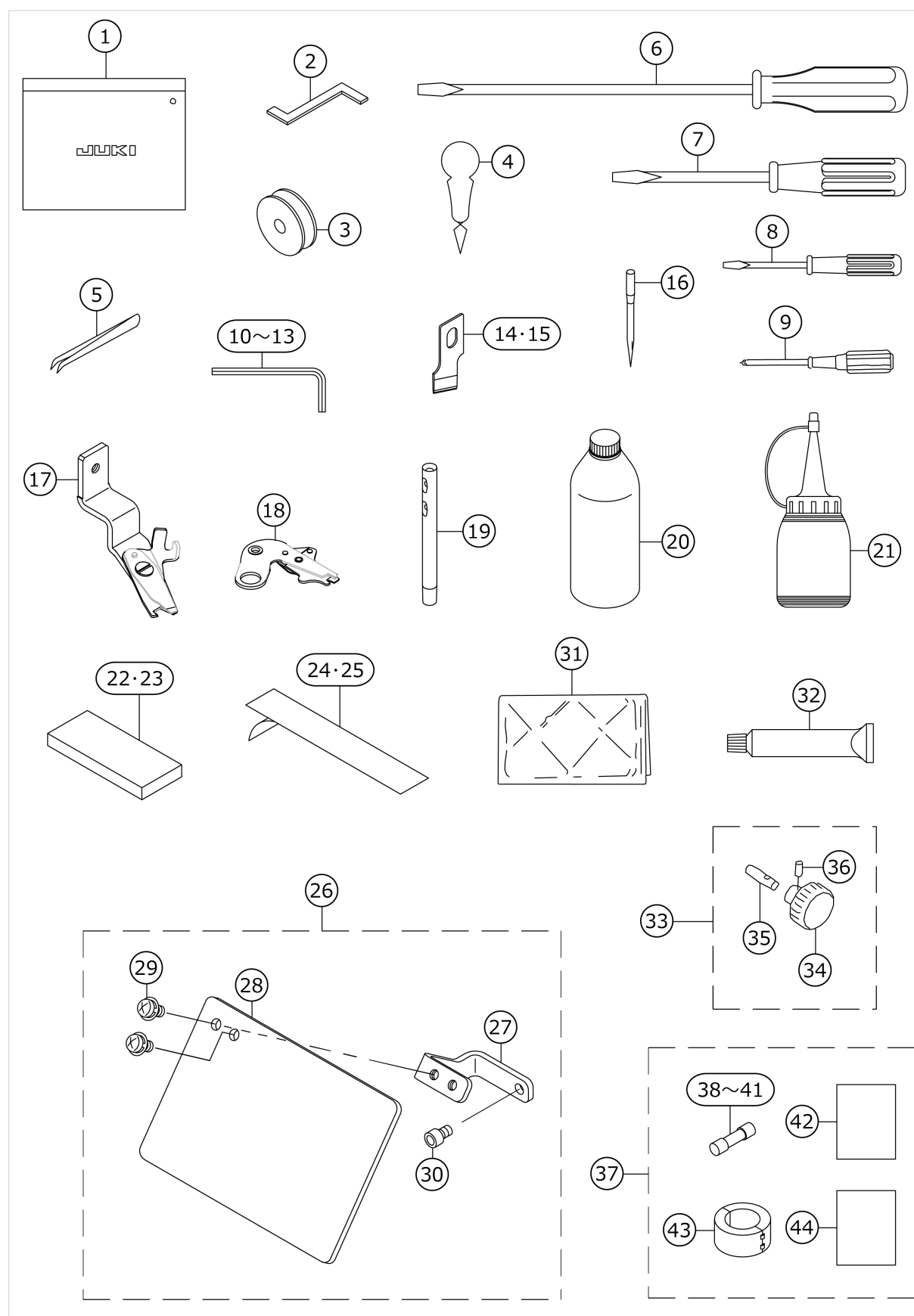
No.	品番	品名	備考	子部品	消耗品	個数
1	40005371	NEEDLE SWING MOTOR ASS'Y				1.00
2	40005372	FEED MOTOR ASS'Y				1.00
3	40005373	CLAMP MOTOR ASS'Y				1.00
4	40005374	UT TRIM MOTOR ASSY				1.00
5	40005375	LT TRIM MOTOR ASSY				1.00
6	40004382	SOLENOID				1.00
7	40006261	ASSY_AT_SOLENOID				1.00
8	40005402	HEAD FAN MOTOR A ASS'Y				1.00
9	40005377	NEEDLE SWING SENSOR ASSY				1.00
10	40005378	FEED SENSOR ASSY				1.00
11	40005379	CLAMP SENSOR ASSY				1.00
12	40005380	UT TRIM SENSOR ASSY				1.00
13	40005381	LT TRIM SENSOR ASSY				1.00
14	HD00057000A	PHOTO SENSOR				1.00
15	40003499	THREAD BREAK DETECTOR A				1.00
16	32002354	SWITCH ASM.				1.00
17	40003495	SAFETY SWITCH ASS'Y				1.00
18	40005403	HEAD FAN MOTOR B ASS'Y				1.00
19	40005382	CUTTER SENSOR JOINT CORD ASSY				1.00
20	40005400	PAUSE SWITCH JOINT CORD				1.00
21	40003497	SAFETY SWITCH JOINT CORD				1.00
22	40003422	INT PCB ASS'Y				1.00
23	40016640	MAIN-INT CORD A ASSY				1.00
24	40016641	MAIN-INT CORD B ASSY				1.00
25	40016642	MAIN-INT CORD D ASSY				1.00
26	40016643	IP-200E ASSY	FOR IP-200			1.00
27	G50011980A0A	BOBBIN WINDER ASM.				1.00
28	40016393	CONTROL BOX A ASSY	FOR USE IN JAP AN/EXPORT 3			1.00
29	40016394	CONTROL BOX B ASSY	FOR EXPORT 1			1.00
30	40005401	FAN MOTOR ASS'Y		*		1.00
31	40005405	WINDER CORD ASS'Y		*		1.00
32	40015556	MAIN PCB B ASSY		*		1.00
33	40015617	SDC-MAIN CORD P ASSY		*		1.00
34	40015618	SDC-MAIN CORD S ASSY		*		1.00
35	40015608	I/O POWER CORD ASSY		*		1.00
36	40016401	MAIN-I/O CORD ASSY		*		1.00
37	40000029	SDC PCB A ASS'Y		*		1.00
38	40015534	I/O PCB ASSY		*		1.00
39	40005393	FLT-SDC CORD P ASS'Y	FOR USE IN JAP AN/EXPORT 3	*		1.00
40	40012038	REACTOR CORD ASSY	FOR EXPORT 1	*		1.00
41	40005394	FLT-SDC CORD S ASS'Y		*		1.00
42	40000056	FLT-T PCB A ASS'Y	FOR USE IN JAP AN/EXPORT 3	*		1.00
43	40000046	FLT-S PCB A ASS'Y	FOR EXPORT 1	*		1.00
44	40005401	FAN MOTOR ASS'Y		*		1.00
45	40015606	FLT INPUT CORD 3P ASSY	FOR USE IN JAP AN/EXPORT 3	*		1.00
46	40015607	FLT INPUT CORD 1P ASSY	FOR EXPORT 1	*		1.00

47	40015554	POWER TRANSFORMER		*		1.00
48	40018093	TRANS JOINT CORD ASSY		*		1.00
49	40017822	PANEL JOINT CORD ASSY	FOR IP-200	*		1.00
50	40017091	AC POWER CORD 3P ASSY	FOR USE IN JAP AN/EXPORT 3			1.00
51	40017092	AC POWER CORD 1P ASSY	FOR EXPORT 1			1.00
52	40015610	POWER CORD 1P ASSY	FOR EXPORT 1			1.00
53	40017821	HEAD FAN JOINT CORD ASSY				1.00
54	40003470	AC SERVO MOTOR				1.00
55	G6951172BA0	HITACHI POWER CORD COMPL.	FOR USE IN JAP AN/EXPORT 3			1.00
56	G6951172CA0	HITACHI POWER CORD COMPL.	FOR EXPORT 1			1.00
57	40015609	POWER CORD 3P ASSY	FOR USE IN JAP AN/EXPORT 3			1.00
58	40059377	IP-310E_STD				1.00



No.	品番	品名	備考	子部品	消耗品	個数
1	40016851	STACKER2 CYL SW ASSY				1.00
2	40016850	STACKER CNT CYL SW ASSY				1.00
3	40016853	PRESET LEDSW ASSY				1.00
4	40016685	AIR BLOW VALVE ASSY				1.00
5	40016845	CARRIER ORG SENSOR ASSY				1.00
6	40016842	CARRIER DECEL SENSOR ASSY				1.00
7	40016843	PRESET CYL FWD SW ASSY				1.00
8	40016846	PRESET CYL BKWD SW ASSY				1.00
9	40016848	PRESET CYL MID SW ASSY				1.00
10	40016847	CARRIER MOV CYL SW ASSY				1.00
11	40016849	START SWITCH ASSY				1.00
12	40016844	PAUSE SWITCH ASSY				1.00
13	40015562	SENSOR JOINT CORD A ASSY				1.00
14	40016852	I/O PCB ASSY				1.00
15	40015534	CARRIER MOTOR				1.00
16	40016666	AIR VALVE CORD ASSY				1.00
17	40016684	AIR VALVE CORD ASSY				1.00

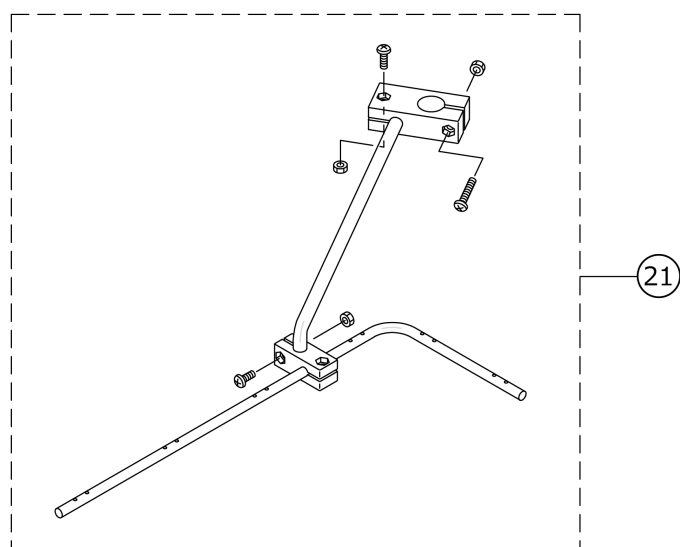
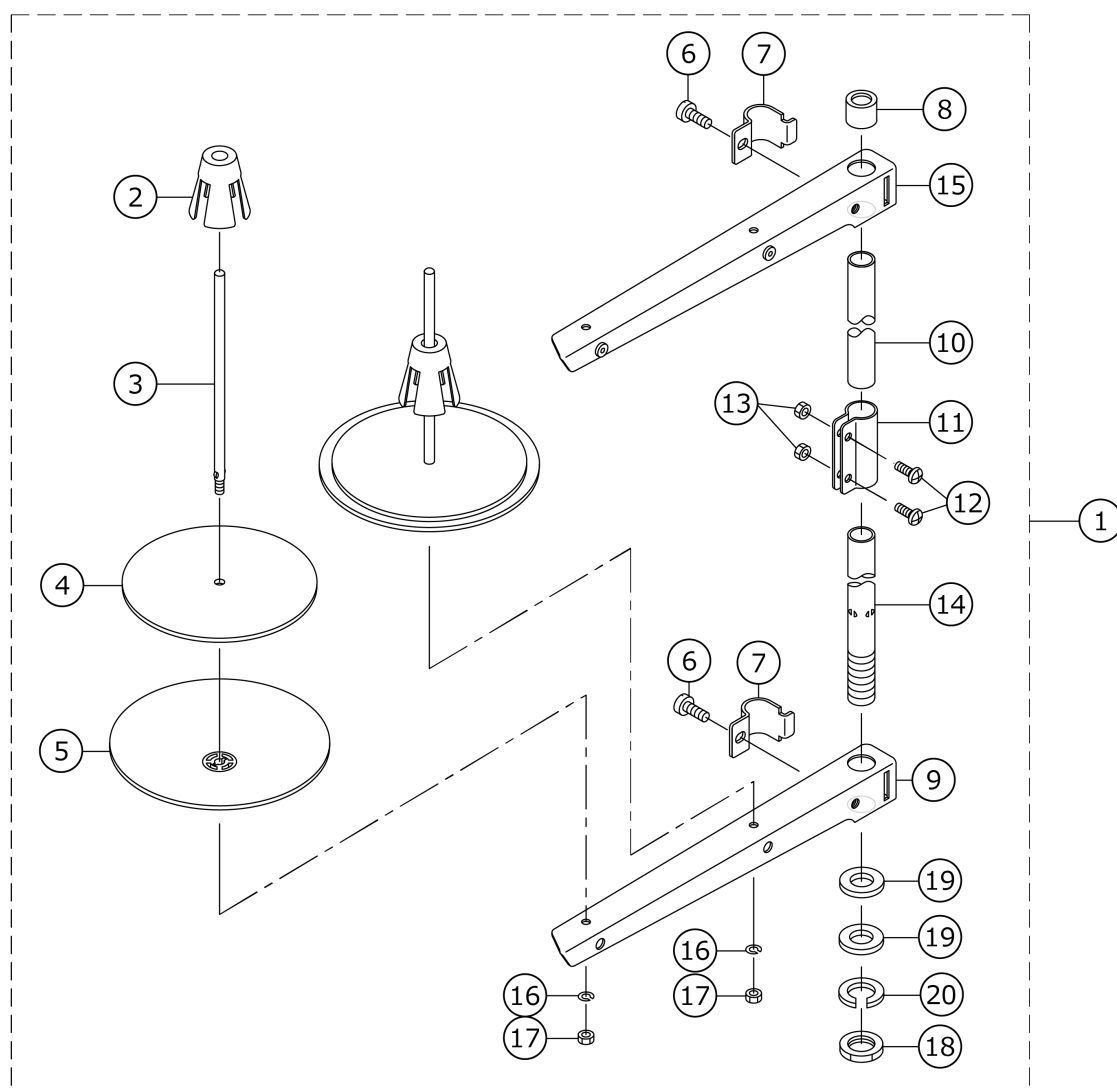
## ACCESSORIES COMPONENTS (1)



No.	品番	品名	備考	子部品	消耗品	個数
1	22932800	ACCESSORIE BAG				1.00
2	40015430	TIMING_GAUGE_ACF				1.00
3	40009148	BOBBIN				1.00
4	B9107761000	THREAD PASSING INSTRUMENT				1.00
5	B9204804000	TWEEZERS				1.00
6	22933006	SCREW DRIVER,LARGE				1.00
7	22933105	SCREW DRIVER,MIDDLE				1.00
8	22933204	SCREW DRIVER,SMALL				1.00
9	MAI17002000	RECESSED HEAD DRIVER (NO.1)				1.00
10	J106600000D	HEXAGONAL WRENCH KEY				1.00
11	GCT02904000	SPANNER				1.00
12	GCT02905000	SPANNER				1.00
13	J106600000A	HEXAGONAL ROD SPANNER 1.5MM				1.00
14	B2702047K00A	KNIFE 3/8				1.00
15	B2702047M00A	KNIFE 5/8				1.00
16	MDP5J0B1102	NEEDLE DPX5 #11J-2				1.00
17	40004255	ASSY_UTT_TRIMMER				1.00
18	40004311	BT_TRIMMER				1.00
19	22502504	THREAD GUIDE BAR				1.00
20	MDFRX1600C0	DEFRIX OIL NO.1(600CC)				1.00
21	J1067000000	OILER				1.00
22	G5134172000	CLAMP CUSHION, LARGE				2.00
23	G5135172000	CLAMP CUSHION, SMALL				2.00
24	G5138172000	CLAMP TABLE LINER				1.00
25	G5302172000	PRESET TABLE LINER				5.00
26	40052047	ASSY SAFETY PLATE B				1.00
27	40049424	SAFETY PLATE BASE		*		1.00
28	B3120372000	SAFETY PLATE		*		1.00
29	SL4040891SC	SCREW M4 L=8		*		2.00
30	SM6040602TP	SCREW M4 L=6		*		1.00
31	26234005	VINYL COVER				1.00
32	40006323	JUKI GREASE A TUBE				1.00
33	G53471720A0	PRESET ADJUSTING HANDLE ASM.				1.00
34	G5347172000	PRESET ADJUSTING HANDLE		*		1.00
35	G5348172000	PRESET ADJUSTING HANDLE BOSS		*		1.00
36	PS0300162KH	SPRING PIN 3X16		*		1.00
37	40016665	CONTROL BOX ACCESORY B ASSY				1.00
38	HF0013050P0	FUSE 5A		*		1.00
39	HF0013040P0	FUSE 4A		*		1.00
40	HF00130315S	FUSE 3.15A 250V REF. NO.112		*		1.00
41	HF003000200	FUSE 2A (220/240V)		*		1.00
42	29275005	EMC PRODUCTION DECLARATION		*		1.00
43	HN002460000	CORES		*		1.00
44	40015521	CORE SETUP MANUAL		*		1.00


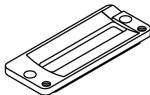
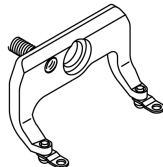


## ACCESSORIES COMPONENTS (2)



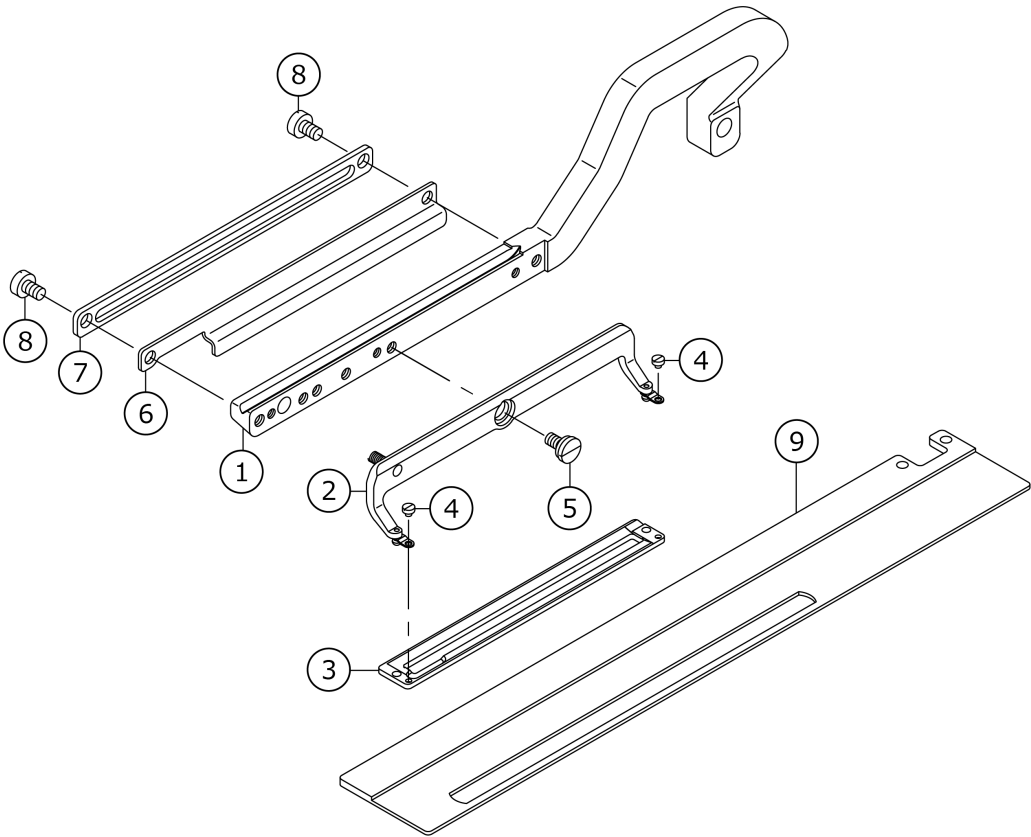
No.	品番	品名	備考	子部品	消耗品	個数
1	22930358	THREAD STAND ASM.				1.00
2	22931109	SPOOL RETAINER		*		2.00
3	22931000	SPOOL PIN		*		2.00
4	22930903	SPOOL REST CUSHION		*		2.00
5	22930804	SPOOL REST		*		2.00
6	SM6061610SC	SCREW M6 L=16		*		2.00
7	22930705	THREAD GUIDE ARM JOINT		*		2.00
8	22931406	SPOOL REST ROD RUBBER CAP		*		1.00
9	22930507	SPOOL REST ARM		*		1.00
10	22930408	SPOOL REST ROD, UPPER		*		1.00
11	22931307	SPOOL REST ROD JOINT		*		1.00
12	SM4051405SE	SCREW M5 L=14		*		2.00
13	NM6050001SE	NUT M5		*		2.00
14	22930309	SPOOL REST ROD, LOWER		*		1.00
15	22930556	THREAD STANDING ARM ASM.		*		1.00
16	WS0510002KN	SPRING WASHER		*		2.00
17	NM6050001SE	NUT M5		*		2.00
18	NM6160511SE	NUT M16X1.5		*		1.00
19	WP1612616SE	WASHER 16X30X2.6		*		2.00
20	WS1643202KR	SPRING WASHER		*		1.00
21	26910059	THREAD GUIDE ARM ASM.				1.00

OPTIONAL DEVICE COMPONENTS (1)

		Cloth Cutting Knife 布切りメス	Presser Foot (Length of Cloth Cutting Knife) 押 え （布切りメス長さ）			Presser Foot (Presser Size) 押え足（押えサイズ）	
							
		標 準 Standard	標 準 Standard	メリヤス用 For Hoisier y	標準（振り巾6mm） Standard (For swing width 6mm)	標 準 Standard	
inch	mm	Ref.no	Ref.no	Ref.no	Ref.no	Ref.no	
1/4	6.4	①	⑫ (6.4 ~ 19.1 mm)	⑮ (6.4 ~ 19.1 mm)	⑱ (6.4 ~ 31.8 mm)	⑲ (Type 1)	
3/8	9.5	②					
7/16	11.1	③					
1/2	12.7	④					
9/16	14.3	⑤					
5/8	15.9	⑥					
1 1/16	17.5	⑦					
3/4	19.1	⑧	⑬ (6.4 ~ 25.4 mm)	⑯ (6.4 ~ 25.4 mm)		⑳ (Type 2)	
7/8	22.2	⑨					
1	25.4	⑩					
1 -1/4	31.8	⑪	⑭ (6.4 ~ 31.8mm)	⑰ (6.4 ~ 31.8 mm)		㉑ (Type 3)	

No.	品番	品名	備考	子部品	消耗品	個数
1	B2702047F00	KNIFE 1/4				1.00
2	B2702047K00A	KNIFE 3/8				1.00
3	B2702047I00	KNIFE (7/16)				1.00
4	B2702047L00A	KNIFE 1/2				1.00
5	B2702047V00	KNIFE 9/16				1.00
6	B2702047M00A	KNIFE 5/8				1.00
7	B2702047A00	KNIFE 1 1/16				1.00
8	B2702047N00	KNIFE 3/4				1.00
9	B2702047P00	KNIFE 7/8				1.00
10	B2702047Q00A	KNIFE 1				1.00
11	B2702047S00A	KNIFE 1 - 1/4				1.00
12	B1552781000A	WORK CLAMP CHECK				1.00
13	B1552782000	WORK CLAMP CHECK, 2				1.00
14	B1552783000	WORK CLAMP CHECK, 3				1.00
15	D1508771K00A	LATCH WORK CLAMP CHECK				1.00
16	D1508772K00	WORK CLAMP CHECK (2K)				1.00
17	D1508773K00	WORK CLAMP CHECK (3K)				1.00
18	14524409	WORK CLAMP CHECK				1.00
19	D1511771KA0A	WORK CLAMP CHECK HOLDER ASM.				1.00
20	D1511772KA0	WORK CLAMP CHECK HOLDER				1.00
21	D1511773KA0	WORK CLAMP CHECK HOLDER				1.00

OPTIONAL DEVICE COMPONENTS (2)



No.	品番	品名	備考	子部品	消耗品	個数
1	40006335	WORK_CLAMP_ARM_120				1.00
2	40008646	ASSY_WORK_CLAMP_CHECK HOLDER_1				1.00
3	40008658	WORK_CLAMP_120				1.00
4	SS6060210SP	SCREW 3/32-56 L= 1.9				4.00
5	SD0790203SP	HINGE SCREW D=7.94 H=2				2.00
6	40006341	UTT_CLOSE_CAM_120				1.00
7	40006342	LIFTING_PLATE_120				1.00
8	SM6050800SP	SCREW M5 L=8				2.00
9	40014871	WORK_CLAMP_CARRIER_ACF_120				1.00

## LIST FOR INFORMATION OF CHANGE

As to the place changed, refer to the corresponding Rev.No.  
When previous parts(Obsoleted part)and new parts(Added parts)are  
not interchangeable with each other:  
In this case,even obsoleted parts(D.)can be ordered with the  
obsoleted part number,so select the parts with changed dates and  
place your orders.

変更箇所は、該当Rev.No.版をご参照ください。

部品の互換性がない変更の場合は、削除された品番でも、ご注文できます。

40015799

No.1382-03...Rev.No.

\*A:Added parts追加部品/D:Obsoleted parts削除部品/E:Erratum訂正

[illegible]

# HOW TO MAKE USE OF THIS PARTS LIST

## 1.Explanation of codes

1)"\*"mark.....means this part is changed from the previous parts book.

As to the details of the change, refer to the "List for information of change".

2)"#01".....refer to "Note" explanation at bottom of page.

## 2.Codes on the "Qty" column

· Each numeral indicates the number of parts required.

· "0.1" and "2.5" indicate the length (in meters) of the respective parts.

3.Parentheses mean that the corresponding part is a subpart that constructs an assembly part.

4.Dotted lines on the Figures indicate assembly parts.

## 1 ."注記"欄の記号説明

1) "\*"印.....前回のパーツブックに比較して今回変更された部品を意味します。

変更内容は、"変更情報リスト"を参照してください。

2) "#01".....ページ下の"注記"の説明を参照してください。

2 .数量欄の数字は、個数を表し、0.1、2.5等の数値は、長さ（単位メートル）を表します。

3 .数量欄の（ ）は、組部品を構成している子部品であることを意味します。

4 .イラストページの－ － － － 枠は、組構成であることを意味します。